

# FUTSAL



## FACILITIES

## GUIDE



# FUTSAL

## FACILITIES GUIDE

**This guide will demonstrate various flexible options that could be applied at a facility enabling introductory and recreational Futsal to be played.**

The FA recognises that currently facilities can act as a limitation and barrier to playing Futsal across England. However at the recreational level of the game The FA believes that with a little bit of creativity and flexibility facilities should not pose too significant an obstacle for recreational and social participation in Futsal.

Although The FA encourages teams and participants to seek to play Futsal on a proper full-size indoor Futsal pitch that has the appropriate markings wherever possible, The FA does realise that this will not always be possible and, in the current stage of developing the game of Futsal in England, a degree of flexibility needs to be considered with regards to facility usage.

**It should be noted that this document is only a guide and it is the responsibility of the individual to ensure that the facility they are using is a safe environment for playing Futsal.**



# PITCH

# SIZES



**The FA recommends the following pitch sizes for the varying levels of Futsal participation:**

Futsal participation type	Minimum length	Minimum width
Recreational and social Futsal	25m	15m
FA National Futsal League	31m	16m
International Futsal	38m	18m
Maximum sized pitch	42m	25m

**In addition** The FA recommends that there should be a two metre run-off around the perimeter of the pitch.

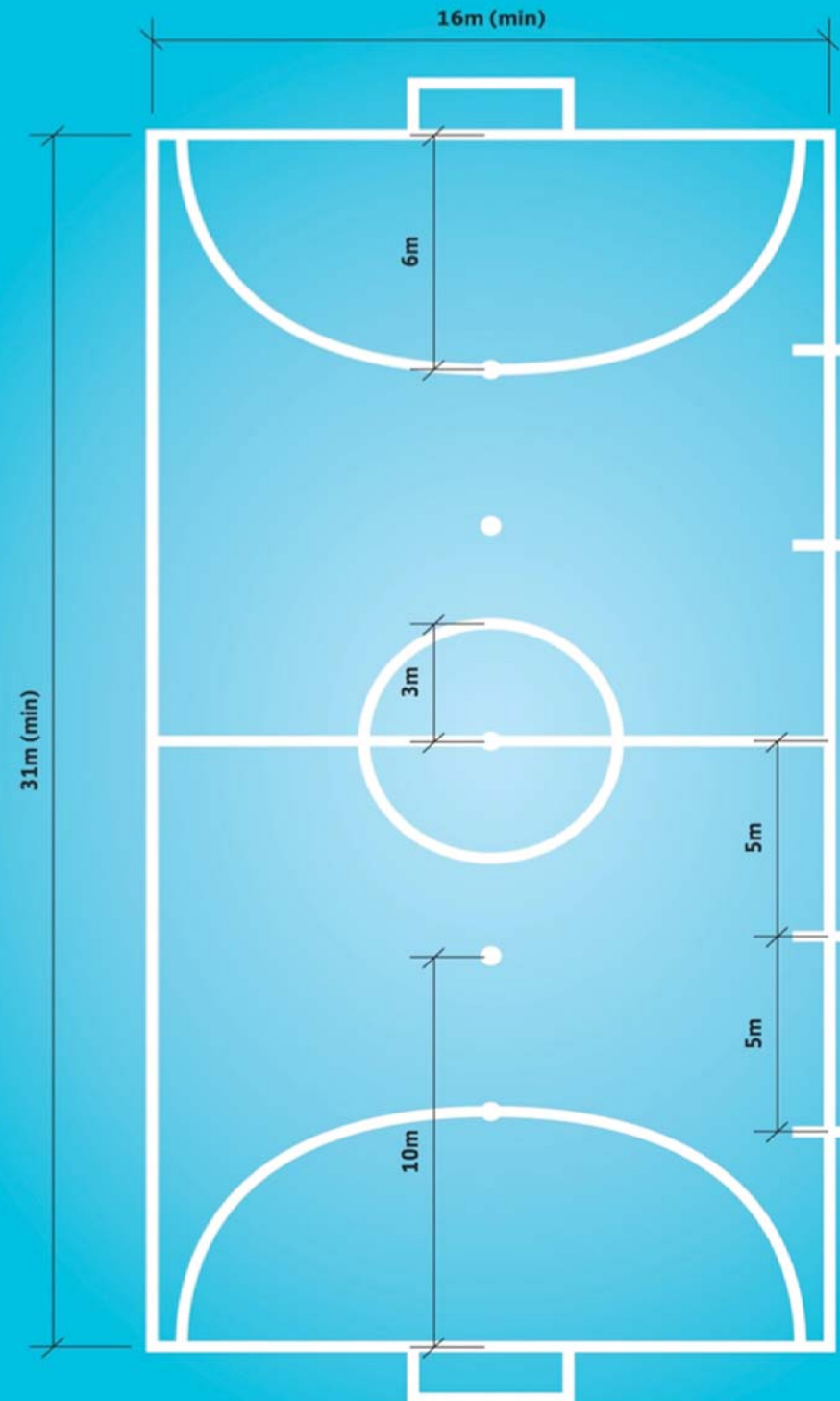
## Floor Surface

Ideally Futsal should be played indoors on a wooden or synthetic surface. However, at the recreational level, where indoor facilities are not available or accessible, the game can be played outdoors on a flat hard surface. The game should not be played on grass, but as a last resort can be played on artificial grass - though this will slow the game down.

## Adapting Existing Facilities for Futsal

In many cases, such as in schools and local authority sports centres, Futsal will be one of many sports that are played at the facility. Outlined in this section are suggestions and guidance on how to potentially integrate a Futsal court into existing markings that are on the court for other sports.

The FA recognises that some of these recommendations do not fully adhere to FIFA's Futsal Laws of the Game, but are only intended for informal and social Futsal to assist the game's growth and development by maximising available facilities.



**A fully-sized marked Futsal pitch should conform to this diagram**

## Futsal pitch dimensions

**The minimum pitch dimensions are 25m x 15m**  
**The maximum pitch dimensions are 42m x 25m**  
**Add corner semi-circles**



# FUTSAL AND

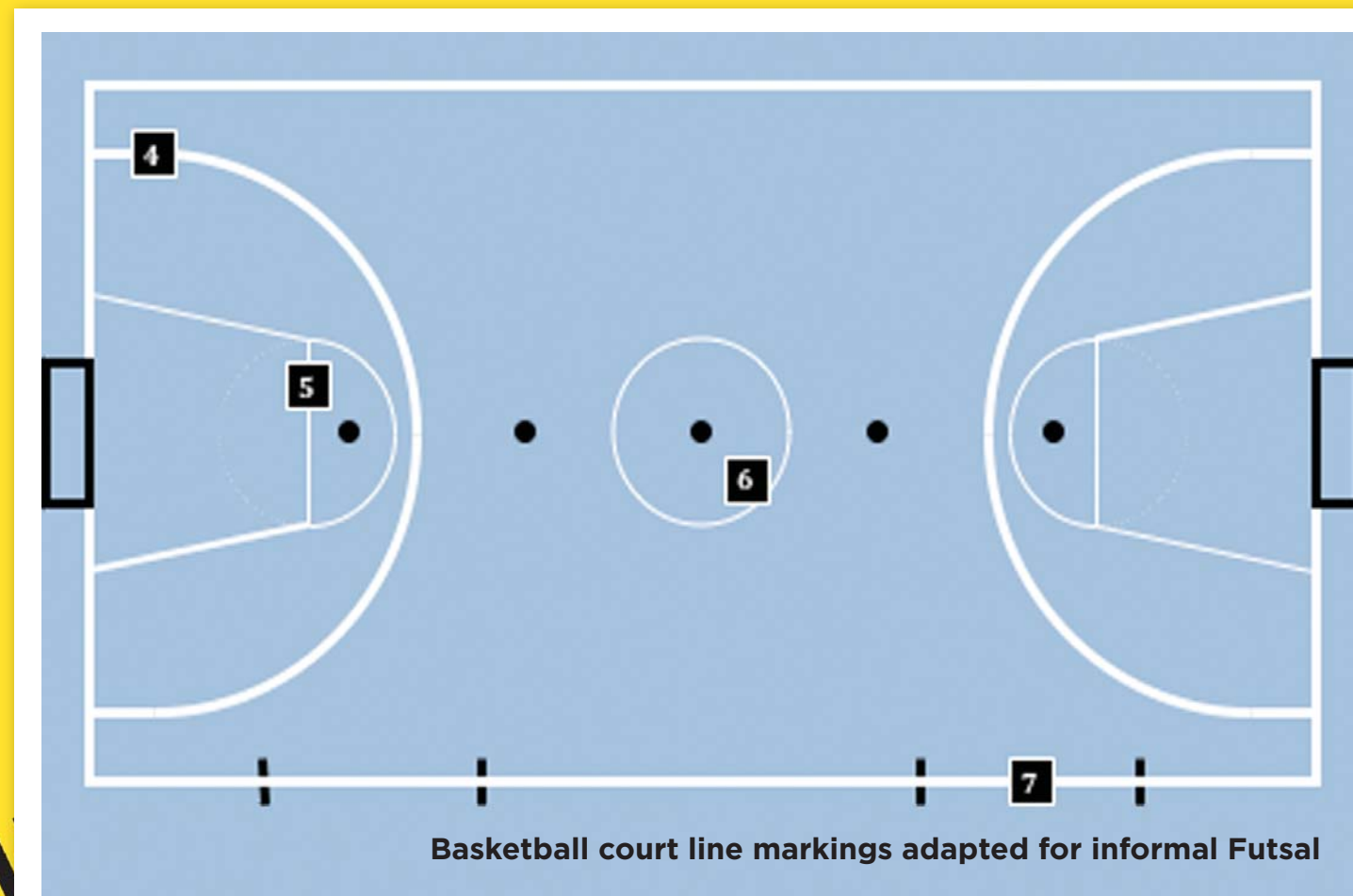
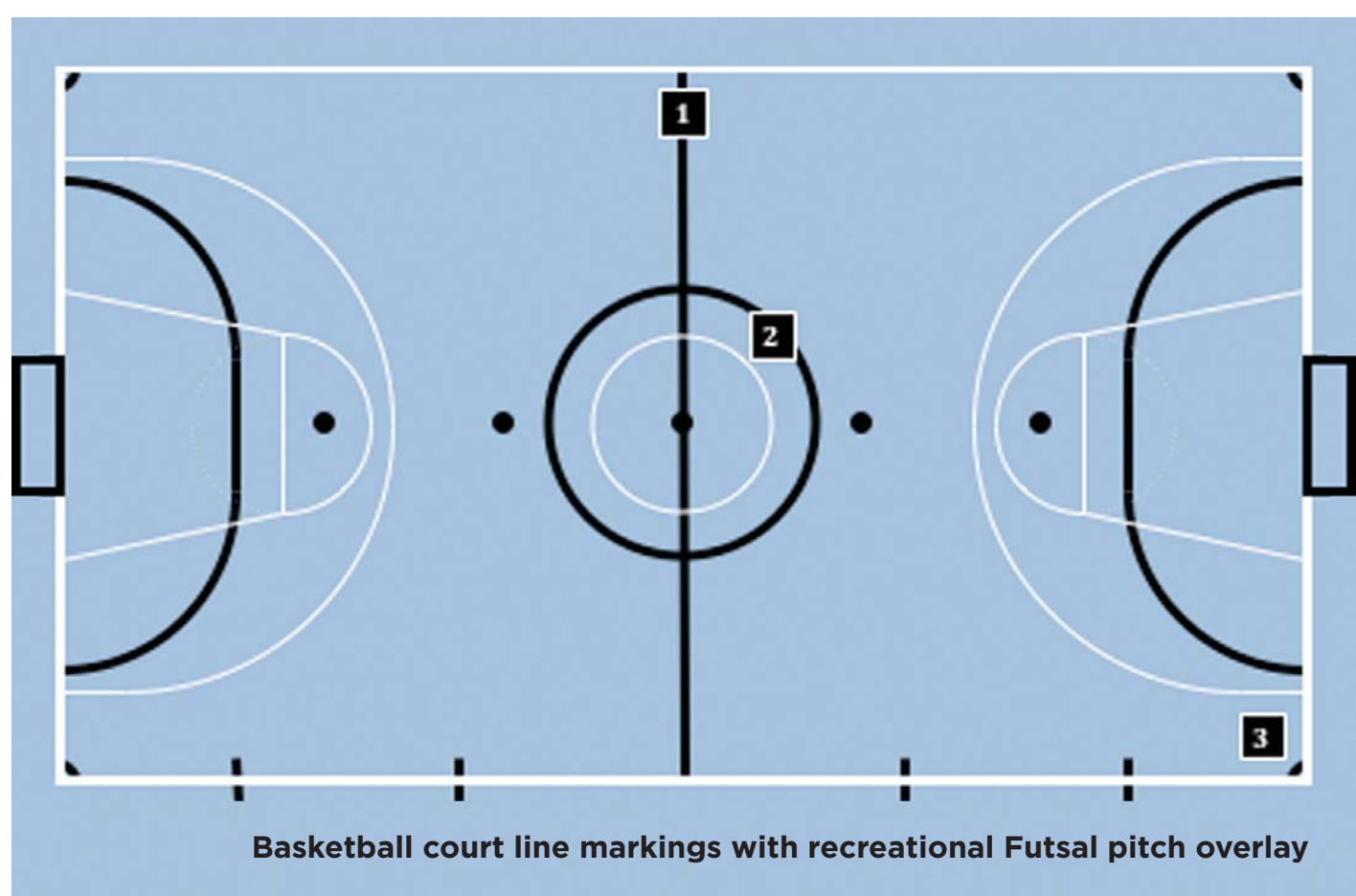
# BASKETBALL



**These diagrams show how a basketball court can be adapted to accommodate a recreational Futsal pitch.**

Basketball courts can also be used for informal Futsal with minimal changes. For example, the diagram below illustrates that the three point line on a basketball court could be used as an improvised (and slightly larger) Futsal penalty area (4).

Other Futsal requirements that would need to be added to the basketball court are the penalty marks (5), centre spot (6) and substitute marks (7).



For Futsal, it would be necessary to add the line markings for the half way line (1), centre circle (2) and corner arcs (3).

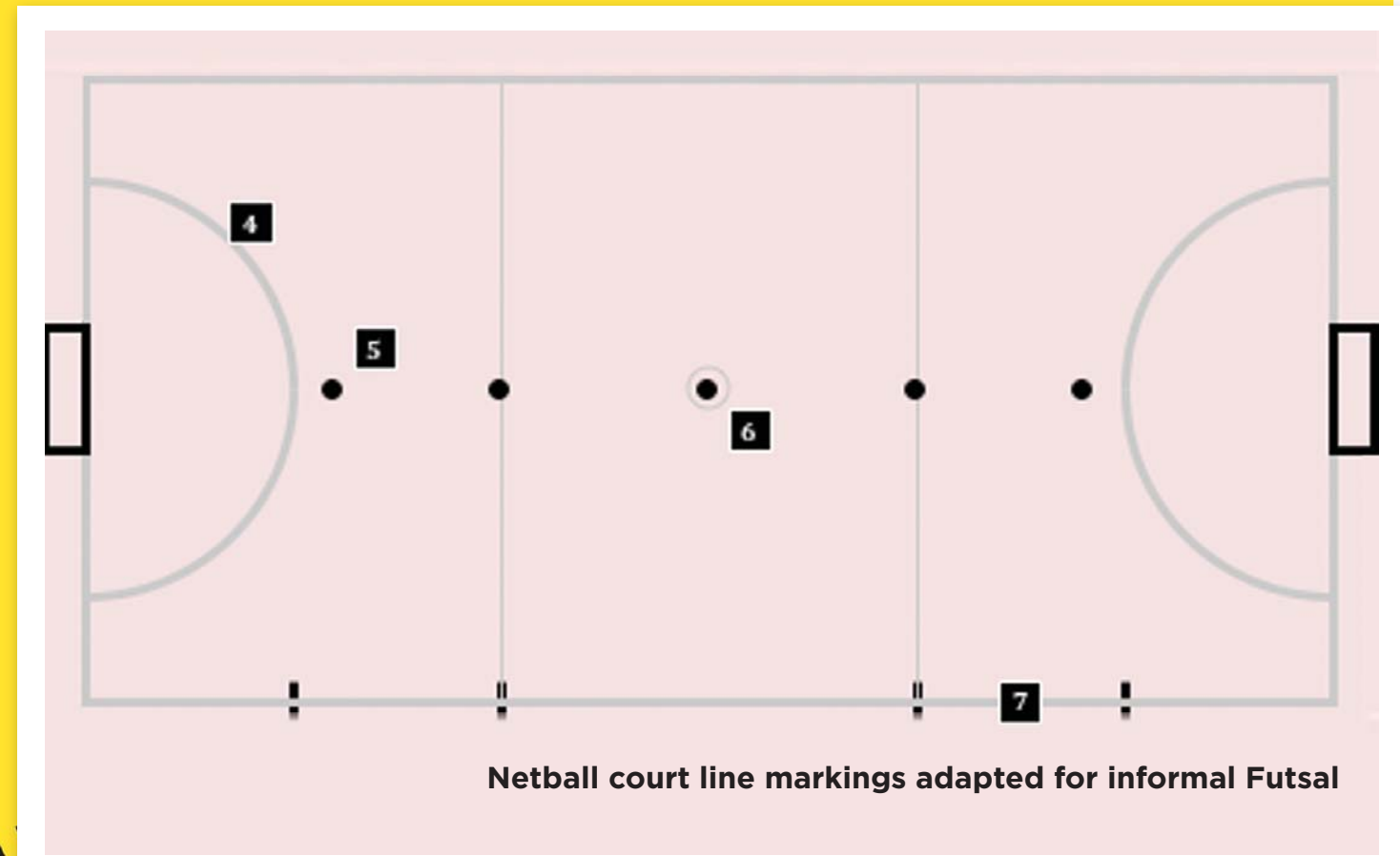
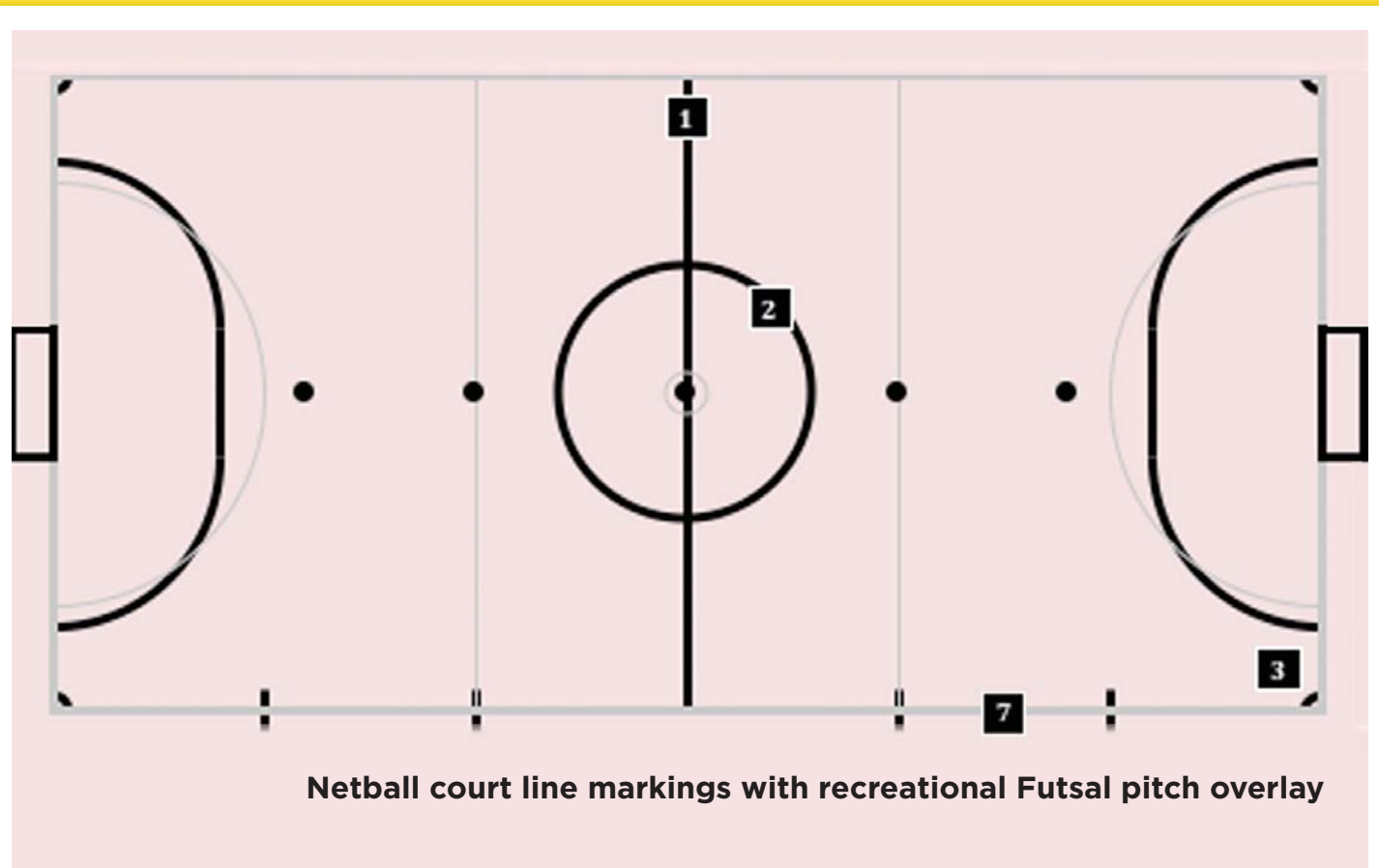


# FUTSAL AND NETBALL



**These diagrams show how a netball court can be adapted to accommodate a recreational Futsal pitch.**

Netball courts can also be used for informal Futsal with minimal changes as demonstrated by the diagram below. The netball goal circle (4) can be used as a Futsal penalty area for informal play with the addition of penalty marks (5), centre spot (6) and substitute marks (7).



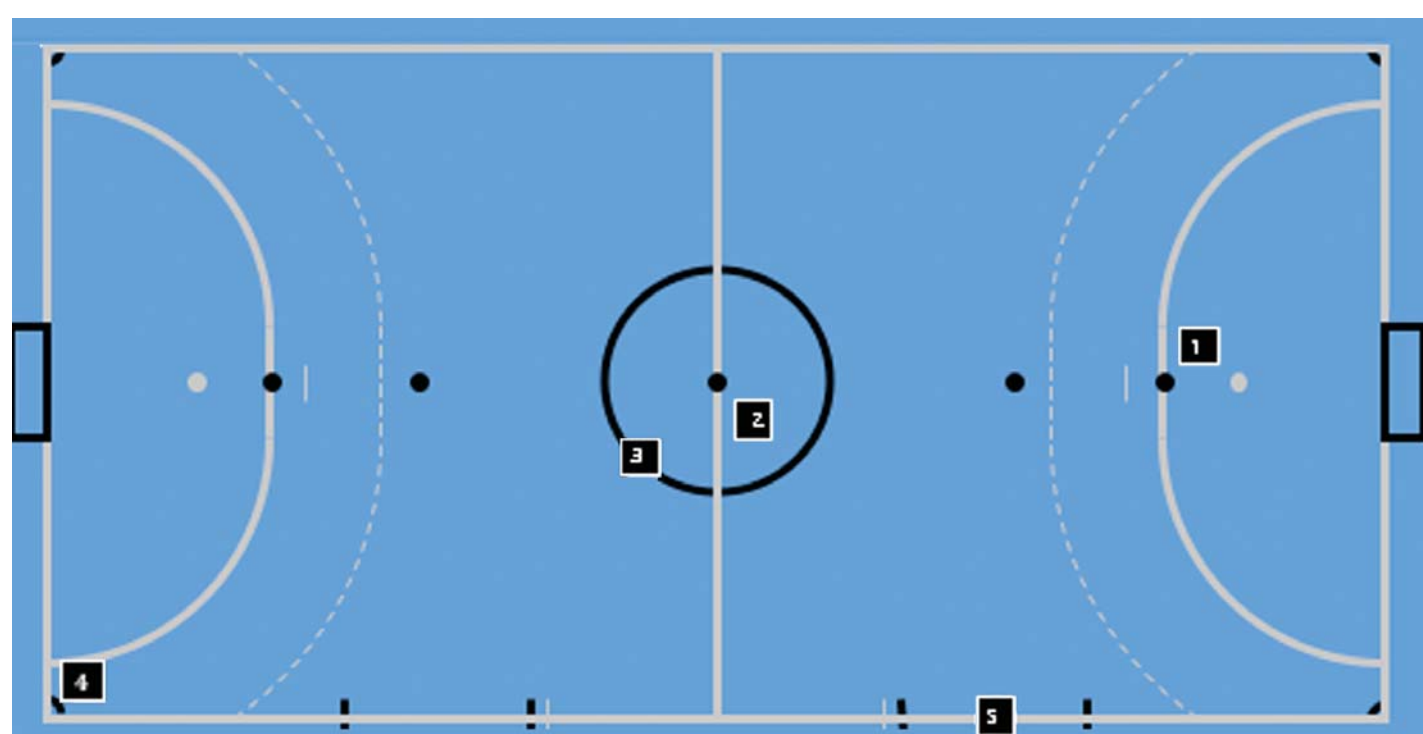
To overlay a recreational Futsal pitch on a netball court, it would be necessary to mark the lines highlighted in the diagram above for the half way line (1), centre circle (2) and corner arcs (3).



# FUTSAL AND

# HANDBALL

**A handball court can easily be adapted to an FA National Futsal League or international size Futsal pitch.**



Handball court line markings with competitive Futsal pitch overlay

The diagram above illustrates that the only additional line markings required are the penalty marks (1), centre spot (2), centre circle (3), corner arcs (4) and substitute zones (5).

