

BIRMINGHAM COUNTY  
FOOTBALL ASSOCIATION

2021 **WOMEN'S COUNTY CUP** 2022  
**FINAL**

WEST BROMWICH ALBION WOMEN  
VS  
WOLVERHAMPTON WANDERERS WOMEN



WEDNESDAY 11 MAY 2022 | KICK OFF 7.30PM | WALSALL FC  
ADULTS £5 | CONCESSIONS £2  
OFFICIAL MATCHDAY PROGRAMME



# COUNTY CUP FIXTURES 2021/22

YOU CAN BE PART OF THE #MORETHANACUP JOURNEY BY ATTENDING OUR 14 COUNTY CUP FINALS DURING APRIL AND MAY 2022.

**SUNDAY AMATEUR CUP**  
EXCELLENCE ARENA  
BIRMINGHAM COUNTY FA  
SUNDAY 10 APRIL, 11AM

**GIRLS COUNTY CUP**  
EXCELLENCE ARENA  
BIRMINGHAM COUNTY FA  
SATURDAY 23 APRIL, 11AM

**SUNDAY VASE**  
EXCELLENCE ARENA  
BIRMINGHAM COUNTY FA  
SUNDAY 24 APRIL, 11AM

**SENIOR CUP**  
ASTON VILLA FC  
WEDNESDAY 4 MAY, 7.30PM

**SATURDAY AMATEUR CUP**  
EXCELLENCE ARENA  
BIRMINGHAM COUNTY FA  
SATURDAY 7 MAY, 2PM

**ROGER WOOD MEMORIAL CUP**  
EXCELLENCE ARENA  
BIRMINGHAM COUNTY FA  
SUNDAY 8 MAY, 11AM

**MIDWEEK FLOODLIT CUP**  
SOLIHULL MOORS FC  
TUESDAY 10 MAY, 7.30PM

**WOMEN'S COUNTY CUP**  
WALSALL FC  
WEDNESDAY 11 MAY, 7.30PM

**JOEL RICHARDS MEMORIAL CUP**  
WALSALL FC  
FRIDAY 13 MAY, 7.45PM

**SATURDAY MINOR CUP**  
EXCELLENCE ARENA  
BIRMINGHAM COUNTY FA  
SATURDAY 14 MAY, 11AM

**MINOR CHALLENGE CUP**  
EXCELLENCE ARENA  
BIRMINGHAM COUNTY FA  
SUNDAY 15 MAY, 11AM


**SATURDAY VASE**  
EXCELLENCE ARENA  
BIRMINGHAM COUNTY FA  
SATURDAY 21 MAY, 2PM


**VETERANS CUP**  
EXCELLENCE ARENA  
BIRMINGHAM COUNTY FA  
SUNDAY 22 MAY, 11AM

**SUNDAY YOUTH CUP**  
EXCELLENCE ARENA  
BIRMINGHAM COUNTY FA  
SUNDAY 29 MAY, 11AM

FOLLOW US ON SOCIAL MEDIA AND STAY UP TO DATE WITH OUR WEBSITE FOR ALL THE LATEST NEWS ON BIRMINGHAM COUNTY FA'S COUNTY CUP FINALS

 @BirminghamCFA

 @Birmingham\_FA

 @BirminghamFA

# WELCOME

---

## WE ARE DELIGHTED TO WELCOME YOU TO TODAY'S COUNTY CUP FINAL

A warm welcome to all the players, coaches, volunteers and supporters of both competing teams and also the match officials for this prestigious County Cup Final.

With 1,200 clubs with a combined 5,200 teams and 77,000 players playing all formats of the game within our boundary, every team that makes it to one of our 14 County Cup Finals should be rightly proud of their achievements.

The previous two years have been difficult with limited amounts of football played due to Covid but we have again received over 500 Cup entries across all of our competitions so the winners can proudly carry the mantle of County 'Champions' which also brings with it the kudos but added responsibility of playing and behaving in the manner that befits the title.

It is also a big day for our match officials who have also dedicated hours and in some cases many years in the middle and on the side-lines at all levels of the game in order to have been selected to represent our 1,200 Birmingham County FA officials at today's final.

I'd also like to take the opportunity of thanking the thousands of volunteers for all the work they do throughout the season to simply help and administer and improve their clubs and teams – more often than not unpaid. Without the range of volunteers at every level of the game and at every club and league, then the game as we know it would not exist, especially grassroots and as part of the celebrations, we will be presenting a volunteer award which each finalist has nominated as a thank you.

I'd also like to thank my colleagues at Birmingham County FA for all the work they do and the support they offer in order to promote, govern and develop the game.

Enjoy the game and celebrate your achievements before, during and after the game and whilst recognising and respecting the opposition and their efforts along with those of the match officials.

Play well and enjoy the memories and friendships that the fixture brings.

Kevin Shoemake  
CEO – Birmingham County FA



**KEVIN SHOEMAKE**  
**CHIEF EXECUTIVE OFFICER**



**BIRMINGHAM COUNTY FOOTBALL ASSOCIATION**  
Ray Hall Lane, Birmingham, B43 6JF  
Support@BirminghamFA.com | [www.BirminghamFA.com](http://www.BirminghamFA.com)



**SHOW SOME**

**RESPECT**

**# SHOW SOME RESPECT**



**RESPECT**



Building society with mutual respect

## WOMEN'S COUNTY CUP

# MEET THE OFFICIALS



### REFEREE

#### SIMON LANE

I started refereeing in the late 90's and enjoying many years as level 4 Supply League referee & assistant on the Contributory Leagues . A great appointment to be Referee Womens County Cup Final, West Bromwich Albion Women v Wolverhampton Wanderers Women at a great stadium like Walsall FC 's the Banks's Stadium. To be officiating in 'The Black Country ' derby at any level is an honour and as in any derby it could go either way. A special mention to say that I'm looking forward to be working with a great team in Don , Luke and Ryan too.



### ASSISTANT REFEREE

#### DONALD WILLIAMS

I've been refereeing football now for more years than I care to remember but I've been tremendously impressed with the advancement in Ladies football, especially over recent years. I am therefore delighted and honoured to have been appointed as an Assistant Referee in the County Cup Final this evening, even more so as my good friend Simon Lane is the match Referee. I hope everyone who attends has a fantastic night and witnesses a top game.



### ASSISTANT REFEREE

#### LUKE WALKER

I've been officiating for about 10 years, this season has been my best. To be appointed to the Womens County Cup final is an achievement and pleasure to be a part of.



### FOURTH OFFICIAL

#### RYAN JENNINGS

It's an honour to of been appointed as fourth official to this Women's County Cup game. I have now been officiating for 10 season as a referee and loved every minute, I hope I can continue for another 10 years.

# MANAGERS THOUGHTS

*with Jenny Sugarman*



## **How are you and your management team feeling ahead of the cup final?**

We are looking forward to the cup final and finishing our season off with another black country derby. It's been quite a rollercoaster of a season with lots of big changes on and off the pitch and the staff and players have worked really hard to lay strong foundations. We've already had two very tough games against Wolves in the league and expect nothing less in the final - but we know what we can deliver and will be ready to give it our best!

## **How do you think your fans support will influence the players on the night?**

Our supporters have been brilliant all year, and there is no better way to finish the season with them than at a cup final. They came out in their numbers to support us in our first ever game at the Hawthorns and cheered us to victory that day. Having them behind us gives the players a lift and that little extra edge that we will need on the night!



## **Have you and the team had any specific preparation for this game?**

Preparation for the cup final hasn't strayed too far from a normal game but we have been able to enjoy a pre match meal at the Hawthorns together to make sure everyone is fuelled and ready to go come kick off!

**WOMEN'S COUNTY CUP**

# **WEST BROMWICH ALBION WOMEN**

## **THE ROAD TO THE FINAL**

### **FIRST ROUND**

**WEST BROMWICH ALBION WOMEN**  
vs  
**BYE**

### **SECOND ROUND**

**WEST BROMWICH ALBION WOMEN 4**  
vs  
**SUTTON COLDFIELD TOWN WOMEN 1**

### **THIRD ROUND**

**SOLIHULL MOORS WOMEN 0**  
vs  
**WEST BROMWICH ALBION WOMEN 2**

### **QUARTER-FINAL**

**WEST BROMWICH ALBION WOMEN 5**  
vs  
**LEAFIELD ATHLETIC LADIES 1**

### **SEMI-FINAL**

**WEST BROMWICH ALBION WOMEN 4**  
vs  
**STOURBRIDGE LADIES 0**



**WEST BROMWICH ALBION WOMEN**

# MEET THE TEAM

## CLUB OFFICIALS



Jenny Sugarman  
Manager

## PLAYERS



**Poppy Bastock**  
Goalkeeper



**Ashlee Brown**  
Defender



**Jess Davies**  
Defender



**Hannah George**  
Defender



**Isabel Green**  
Defender



**Freya Smith**  
Defender



**Sophie Tudor**  
Defender



**Trina Greaves**  
Midfielder



**Abi Loydon**  
Midfielder



**Shannon Stamps**  
Midfielder



**Rosie Embley**  
Midfielder



**Kerry Walklett**  
Midfielder



**Leigh Dugmore**  
Attacker



**Mariam Mahmood**  
Attacker



**Leanne Robinson**  
Attacker



**Olivia Stubbs**



# SAVE TODAY, PLAY TOMORROW

Birmingham County Football Association is committed to pioneering the way in which football minimises the impact of its activities on the environment.



More information on our commitment to creating a sustainable game is available below, along with helpful resources and documents that clubs, leagues and participants can use to help make a significant, positive contribution to the environment. Find out more by clicking [here](#).

**Environmental Policy.** We are now taking steps to measure our impact on the environment and set ambitious targets for ongoing improvement, and will comply with all relevant environmental legislation. View our policy [here](#).

**WM Net Zero Business Pledge.** We are proud to have joined over 50 organisations across the region in committing to the WM Net Zero Business Pledge. [Find out more](#).



**Green Innovation Fund.** As part of Birmingham County FA's commitment to creating a low carbon, greener game, we are giving clubs the opportunity to apply for grant funding up to the value of £750 to help support innovative, environmentally positive sustainability projects at a grassroots level. Keep an eye on the portal opening [here](#).

**British Association for Sustainable Sport (BASIS).** They are the sustainability hub for the UK sports industry with a fierce belief in sustainable sport: not-for-profit committed to delivering a positive impact for sport at every level, and harnessing the power of sport to make a difference for all. Click [here](#) for more information.



**Be A Super Supporter and Liftshare.** We have partnered with Liftshare to launch the first-ever car sharing scheme in grassroots football. Liftshare are the UK's largest car sharing organisation & this partnership provides you the opportunity to join the 750,000 likeminded people across the country to reduce their emissions footprint and save money. You can register to join our community [here](#).



---

FOLLOW THE SAVE TODAY, PLAY TOMORROW CHANNELS ON SOCIAL MEDIA AND STAY UP TO DATE WITH OUR WEBSITE FOR ALL THE LATEST NEWS ON SUSTAINABILITY

@SaveTodayPlauTomorrow

@stpt2021

@savetodayplaytomorrow

**Planet Mark Certified.** We're proud to announce that we've achieved the Planet Mark Year 2021 Business Certification. This is an incredible achievement involving the entire business. In this crucial #DecadeofAction, measuring our own carbon footprint has been a critical step in reducing our impact on the planet and society and through the findings and recommendations from the report we are on the right track to meet our Net Zero ambitions by 2030. View our full Planet Mark Report [here](#).



**Football Rebooted.** We are kicking off 2022 by partnering with Football Rebooted to help them achieve their ambitious target of saving one million pairs of football boots from landfill, and redistributing them across the West Midlands region through a network of boot collection points located at grassroots football clubs. You can view the collection points [here](#).

**Corporate Travel Management.** CTM is a Global Travel Management company with offices all over the globe. Our Sports Travel Management division leverages the team travel, VIP, and event management CTM expertise of the global CTM group to provide winning travel solutions to the sports industry. Find out more [here](#).



**Pledgeball** **Pledge of Sustainability.** We have partnered with the charity, Pledgeball for the 21/22 season, to encourage all clubs to sign up for the first-of-its-kind Sustainability Pledge in football. Using Pledgeball's unique digital platform, all clubs are eligible to join along with their members, supporters and family and make simple lifestyle choices that help improve the planet and move your club up the Sustainability League Table. View the league table [here](#).

---

**FIND OUT MORE ABOUT OUR SUSTAINABILITY PROGRAMME BY CLICKING ANY OF THE FOUR WORKSTREAM LOGO'S BELOW:**



**THE AMBITIOUS GOAL OF LOW CARBON FOOTBALL**

# MANAGERS THOUGHTS

*with Dan McNamara*



## **How are you and your management team feeling ahead of the cup final?**

There is a real excitement around the group ahead of the cup final. The whole team are looking to add to the league trophy we have already claimed this season. We know it will be a very stern test against a much-changed WBA since we last seen them in the league. Jenny has done a great job in turning them into a force in the small time she has been there. I don't think the league results count for anything Wednesday night. It is a cup final and it will come down to who wants to have more desire and heart on the evening. Full trust in my players to go out and execute a game plan as they have done all year and hopefully get the result.



## **How do you think your fans support will influence the players on the night?**

I have to admit it is really disappointing for us to have the Men's game re arranged for the same day so our true supporter numbers may be slightly down. But having witnessed all year just how amazing they have been both home and away I am sure they will make enough noise to get us over the line. Time and time again they have helped us through some tough moments this year. I am positive they will do it again. Sing loud and proud and once again #Daringsforfree

## **As you are away, have you made any specific arrangements for your team to get prepared?**

We have been on zoom calls etc but not really. The thing I am most proud of throughout my time at Wolves has been the culture and environment we have created, the girls run it and drive the standards we expect. Karl Milgate, a very close friend of mine has been brought in to oversee the rest of the season and be an extra pair of hands. The staff have been fantastic this season and they are more than capable of getting the result we require in the final 2 games. Them, and my players have my full trust as always.

**WOMEN'S COUNTY CUP**

# WOLVERHAMPTON WANDERERS WOMEN

## THE ROAD TO THE FINAL

### FIRST ROUND

WOLVERHAMPTON WANDERERS WOMEN  
VS  
BYE

### SECOND ROUND

WOLVERHAMPTON WANDERERS WOMEN  
AWAY WIN WALKOVER

### THIRD ROUND

BEDWORTH UNITED LADIES 0  
VS  
WOLVERHAMPTON WANDERERS WOMEN 9

### QUARTER-FINAL

KNOWLE LADIES 0  
VS  
WOLVERHAMPTON WANDERERS WOMEN 4

### SEMI-FINAL

BOLDMERE ST MICHAELS WOMEN 0  
VS  
WOLVERHAMPTON WANDERERS WOMEN 5



## WOLVERHAMPTON WANDERERS WOMEN

# MEET THE TEAM

## CLUB OFFICIALS

THE MEMBERS OF STAFF IN THE DUGOUT FOR THE FINAL



**Karl Milgate**  
Interim Manager



**Marcus Webber**  
Coach



**Hugh McCluskie**  
Coach



**Nathan Maxfield**  
Goalkeeping Coach



**Roy Williams**  
Fitness Coach

## PLAYERS

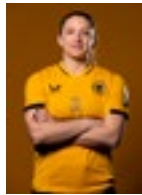
WE ASKED THE PLAYERS FOR THEIR POSITION, INSPIRATIONAL PLAYER AND CHILDHOOD CLUB



**Shan Turner**  
Goalkeeper  
Steven Gerrard  
Birmingham City



**Emma Cross**  
Defender  
Conor Coady  
Wolves



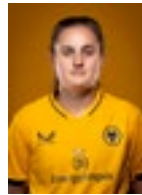
**Laura Cooper**  
Defender  
Jordan Henderson  
Shrewsbury Town



**Anna Price**  
Defender  
Steven Gerrard  
Wolves



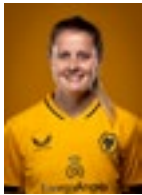
**Kelly Darby**  
Defender  
Rio Ferdinand  
Manchester United



**Anna Morphet**  
Defender  
Steven Gerrard  
Shrewsbury Town



**Ria Elsmore**  
Defender  
Conor Coady  
Wolves



**Lowri Walker**  
Midfielder  
Gerrard/Alonso  
Penparcou Juniors



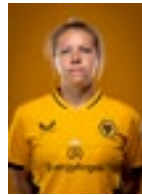
**Beth Merrick**  
Midfielder  
Matt Jarvis  
Wolves



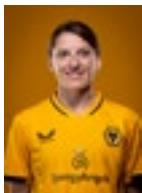
**Tammi George**  
Midfielder  
Pedro Neto  
Wolves



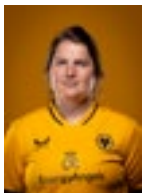
**Summer Holmes**  
Midfielder  
Steven Gerrard  
Wolves



**Helen Dermody**  
Midfielder  
Frank Lampard  
Coventry United



**Jade Cross**  
Striker  
Jamie Vardy  
Wolves



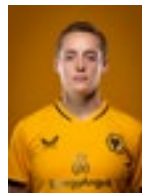
**Maz Gauntlett**  
Striker  
Wayne Rooney  
Birmingham City



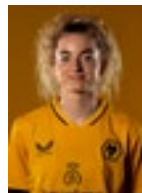
**Amy Dicken**  
Striker  
Eden Hazard  
Gornal Girls



**Amber Hughes**  
Striker  
Steven Gerrard  
Leafield Athletic



**Ali Miller**  
Striker  
Megan Rapinoe  
Sandhurst Town



**Ellie Butler**  
Striker  
Heung Min Son  
Tottenham Hotspur



22

GRASSROOTS  
FOOTBALL  
AWARDS

NOMINATE YOUR  
HERO  
NOW

22 22 22 22 22  
22 22 22 22 22  
22 22 22 22 22  
22 22 22 22 22  
22 22 22 22 22  
22 22 22 22 22  
22 22 22 22 22  
22 22 22 22 22  
22 22 22 22 22  
22 22 22 22 22  
22 22 22 22 22  
22 22 22 22 22

[CLICK  
HERE](#)



22 22



**TICKETS ON SALE NOW!**

Share unforgettable moments this summer!

FIND OUT MORE



**Have Fun!**

## **WOMEN'S AND GIRLS FOOTBALL**

Women's football across the Birmingham County FA ranges from recreational small sided games, to professional teams with international players who are at the highest level of the game.

We support a number of leagues and opportunities across the county for women and girls to play the beautiful game, which includes one of the largest Youth Female Leagues in the country.

- RTC'S
- Squad Girls
- Walking Football
- Coach Development Workshops

For further information on any of the above, please visit our website [here](#), or contact [Vicky.Mitchell@BirminghamFA.com](mailto:Vicky.Mitchell@BirminghamFA.com)

# BIRMINGHAM COUNTY FOOTBALL ASSOCIATION

# WOMEN'S COUNTY CUP 2021 **FINAL** 2022

## WEST BROMWICH ALBION WOMEN



Poppy Bastock  
Ashlee Brown  
Jess Davies  
Leigh Dugmore  
Rosie Embley  
Hannah George  
Trina Greaves  
Isabel Green  
Abi Loydon  
Mariam Mahmood  
Leanne Robinson  
Freya Smith  
Shannon Stamps  
Olivia Stubbs  
Sophie Tudor  
Kerry Walklett

### COACHING STAFF

Jenny Sugarman  
Liam Wall  
Tash Tezgel  
Alex Boardman  
Rob Elliot  
Cameron Wilson

First Choice Colours:  
Navy & White Shirts, White Shorts & Navy Socks



## WOLVERHAMPTON WANDERERS WOMEN

Ellie Butler  
Laura Cooper  
Emma Cross  
Jade Cross  
Kelly Darby  
Helen Dermody  
Amy Dicken  
Ria Elsmore  
Maz Gauntlett  
Tammi George  
Summer Holmes  
Amber Hughes  
Beth Merrick  
Alisha Miller  
Anna Morphet  
Anna Price  
Shannon Turner  
Lowri Walker

### COACHING STAFF

Karl Milgate - Manager  
Marcus Webber - Coach  
Nathan Maxfield - GK Coach  
Hugh McCluskie - Coach  
Roy Williams - Fitness Coach

First Choice Colours:  
Gold Shirts, Black Shorts & Gold Socks

### TROPHY PRESENTED BY

Sandra Hampton, BCFA Non-Executive  
Director

### MATCH OFFICIALS

Referee: Simon Lane  
Assistant Referee: Donald Williams  
Assistant Referee: Luke Walker  
Fourth Official: Ryan Jennings

### NEXT FINAL

Joel Richards Memorial Cup  
Walsall FC  
Friday 13 May, 7.45pm

