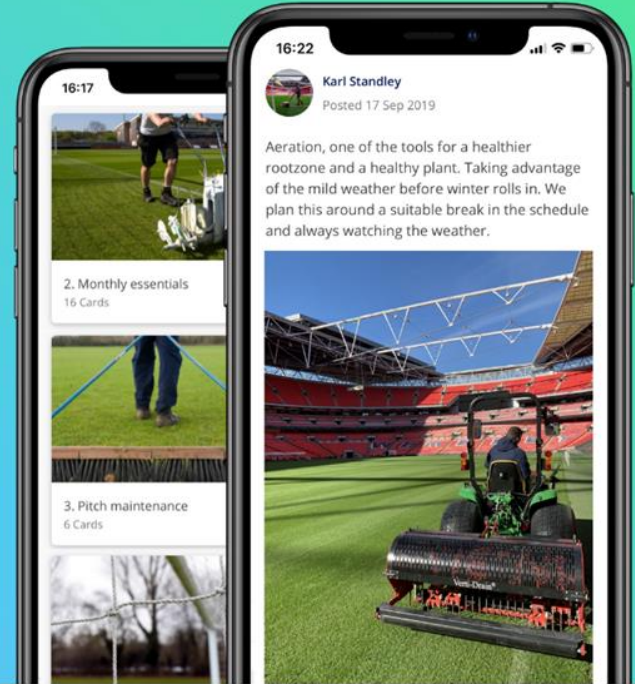


# Join The Football Foundation Groundskeeping Community

on  Hive learning



- **Build** on your knowledge of key tasks
- **Prepare** for all weather conditions with seasonal content and advice
- **Seek** expert advice from IOG Regional Pitch Advisors
- **Share** your expertise to help develop others



Activate your free account today  
[thefa.hivelearning.com/groundskeeping](https://thefa.hivelearning.com/groundskeeping)

created in partnership with the



16:17



### 2. Monthly essentials

16 Cards



### 3. Pitch maintenance

6 Cards



08:38

GaNTIP Community Manager posted

Yesterday

@Group Aeration is a great way of stimulating pitch growth (respiration), improving the drainage of surface and subsurface water, and alleviating compaction. But knowing when - and when not - to..... [Read more](#)

What are the best conditions to aerate in?

Nobody can see who voted.

When the grass is growing and has the ability to recover 66%

During the playing season 27%

When the playing surface is soft or waterlogged 7%

When the pitch is frozen or after a frost 0%

41 Votes



2 Likes 7 Comments



Scott Brooks

11 hours ago

08:31



What advice would you give to groundskeepers working in grassroots considering a more eco approach to their role?

Read up on more green practices and see how you as a club and groundskeeper can implement them - start off small and gradually implement more.

Also, don't be afraid to ask for advice and ask questions at seminars or grounds meetings - start off by asking your County FA's pitch advisors.

As a support pitch advisor, what questions are you typically asked, and what advice would you give to the community that may share

