



**ENGLAND  
FOOTBALL**

Transforming kitchens for clubs and communities



# Howdens Game Changer Programme

Application Guidance For Clubs

The background is a solid red color. In the upper right quadrant, there is a large, dark red circle. In the lower right quadrant, there is a smaller, white circle. The text is centered and consists of three lines of bold, italicized, white-outlined letters.

*TRANSFORMING  
KITCHENS FOR CLUBS  
AND COMMUNITIES.*



# Welcome

## HOWDENS AND THE FA HAVE PARTNERED TOGETHER TO OFFER GRASSROOTS CLUBS THE OPPORTUNITY TO APPLY FOR A HOWDENS KITCHEN FOR THEIR CLUB.

We know that whatever the weather, refreshments go down well and enable clubs to generate much needed revenue.

Having a great refreshment offer for players, coaches, volunteers, officials and spectators is part of grassroots football across the country. I am excited that Howdens and The FA have partnered together to offer grassroots clubs the opportunity to apply for a Howdens kitchen for their club.

We welcome applications from England Football Accredited grassroots clubs to replace, enhance or modernise their kitchens and food and drink offer.

We know that whatever the weather, refreshments go down well and enable

clubs to generate much needed revenue to sustain themselves and maintain their facilities, whilst bringing together the local community.

Why not read through the guidance in this document and make an [application](#). The window opens on 2nd December 2024 and will close on 31st January 2025.

**James Kendall**  
Director of Football Development  
The FA



## About the programme

### HOWDENS HAVE PARTNERED WITH THE FA TO **INVEST £3M** INTO IMPROVING KITCHENS FOR GRASSROOTS CLUBS

Club facilities are the beating heart of local communities and football brings people together.

#### **ABOUT THE PROGRAMME**

Howdens have partnered with the FA to invest £3M into improving grassroots club's kitchens so that they can serve their communities with food and refreshments.

Providing high quality facilities not only provides vital refreshments to players and spectators, but it also enables clubs to generate additional income which can then be re-invested back into the club for the benefit of all.

We want to support projects that will replace or enhance your current kitchen and the food and drink that can be offered.

By inviting clubs to apply for the Howdens Game Change Programme, we would like applications to demonstrate how the improvements will connect with your communities and make the best use of the skills within your club.

## Who can apply?

### WHO CAN APPLY?

England Football Accredited clubs who:

- Are 2 or 3 star Accredited
- Are 1 star Accredited and have a minimum of 6 teams with the ambition to become a 2 star Accredited club

In addition the club must:

- Own their facilities freehold or
- Have a lease of 5 years or longer and have your landlord's consent to undertake the proposed works or
- Have a licence in place for the next 5 years with landlord consent to carry out the works

If you do not have the freehold or a lease of 5 years or longer then we would accept the freeholder as a joint applicant. This could include Local Authorities, County Football Associations, registered charities, not-for-profit companies, community interest companies (CIC) or other social enterprises, and town and parish councils.

Applications will be considered where the applicant has a lease of 5 years or longer but it contains a break clause in favour of the landlord. We will consider these types of applications if clubs can evidence a history of ongoing site usage.

## Who can't apply?

### WHO CAN'T APPLY?

You can't apply if you're:

- An individual or sole trader
- A national governing body
- A commercial / for-profit entity
- A club within the Premier League and Football League
- Educational establishments providing facilities solely for their students
- A Local Authority
- A County FA
- A Professional Club Community Organisation

- If you have a senior team that plays in either the Men's National League system (steps 1-4) or the Women's Pyramid of Football (tiers 1-2) and your project is to improve kitchen / refreshment facilities for the sole benefit of the stadium pitch, then you cannot apply.

Clubs who play at this level should apply for funding from the Premier League Stadium Fund to improve hospitality facilities. However, if the kitchen would be supporting a stadium 3G pitch with usage from grassroots teams then you would be eligible to apply. In addition, if you have a team that plays at the levels stated above, but have pitches on the same site that serve grassroots teams, then you are also eligible to apply.

# What we will support

If successful, Howdens will be responsible for the supply of the kitchen. This includes the cabinets, drawers, hinges, handles, frontals, cabinet rims, worktops, sinks, taps and appliances.

Priority will be given to applications that include a nominated fitter that will install the kitchen on a voluntary basis (or a professional fitter funded by the club) and applications that provide more detail on the impact a new kitchen would have on their club and the local community.

However, in the event of a club not being able to source a local tradesperson to install the kitchen, there is the option for Howdens to support the installation by identifying a suitable tradesperson for the club to work with.

Additional works to kitchen space including preparation work would need to be either carried out or paid for by the club.

## WHAT WE WILL NOT SUPPORT

The following items and services will not be included in the scope for Howdens to deliver and clubs should make provisions to have the work completed themselves:

- Plumbing and electrical work required to get the space ready for install and bringing it up to the relevant standards. This work should be carried out prior to the fit of the kitchen being arranged.
- Flooring repairs or installation. If the flooring is to be replaced, the club will need to confirm the specification to determine if the flooring needs to be installed before or after the kitchen installation.
- Any decoration work required on completion of the kitchen installation.
- The club will need to source any furniture e.g. chairs, stools, tables etc.
- Freestanding small domestic appliances such as toasters, kettles, air fryers and commercial catering water boilers will need to be arranged by the club.
- Structural works required e.g. moving of walls, doors or windows.

- Internal accessibility works, apart from a serving counter which will be considered as part of the kitchen design.
- Any works involving the connection or removal of gas appliances / supply.
- Any works involving electrical upgrades, including the installation of sockets and lighting for the kitchen.
- All electrical and gas works should be carried out by a qualified and certified contractor.





## What do you need to consider before getting started on your application?

### THINGS TO CONSIDER:

- Why is a new kitchen required?
- Do you have a project team in your club who can develop your application and project?
- Does your kitchen work for you now and does it create revenue for the club?
- Are there opportunities to enhance your current food and refreshments offer?
- How do you currently manage the kitchen and how do you plan to manage it in the future?
- Have you carried out any research into what food and refreshments players and spectators want?
- What appliances and equipment would you need to enhance your current food and refreshment offer?
- Do you know a contractor or kitchen fitter who you could nominate on your application?
- When would you plan to carry out the works?
- Can you describe the space, how it is used and what your ideas and requirements are for the new kitchen?
- New build pavilions/clubhouses will be considered if the building works and kitchen

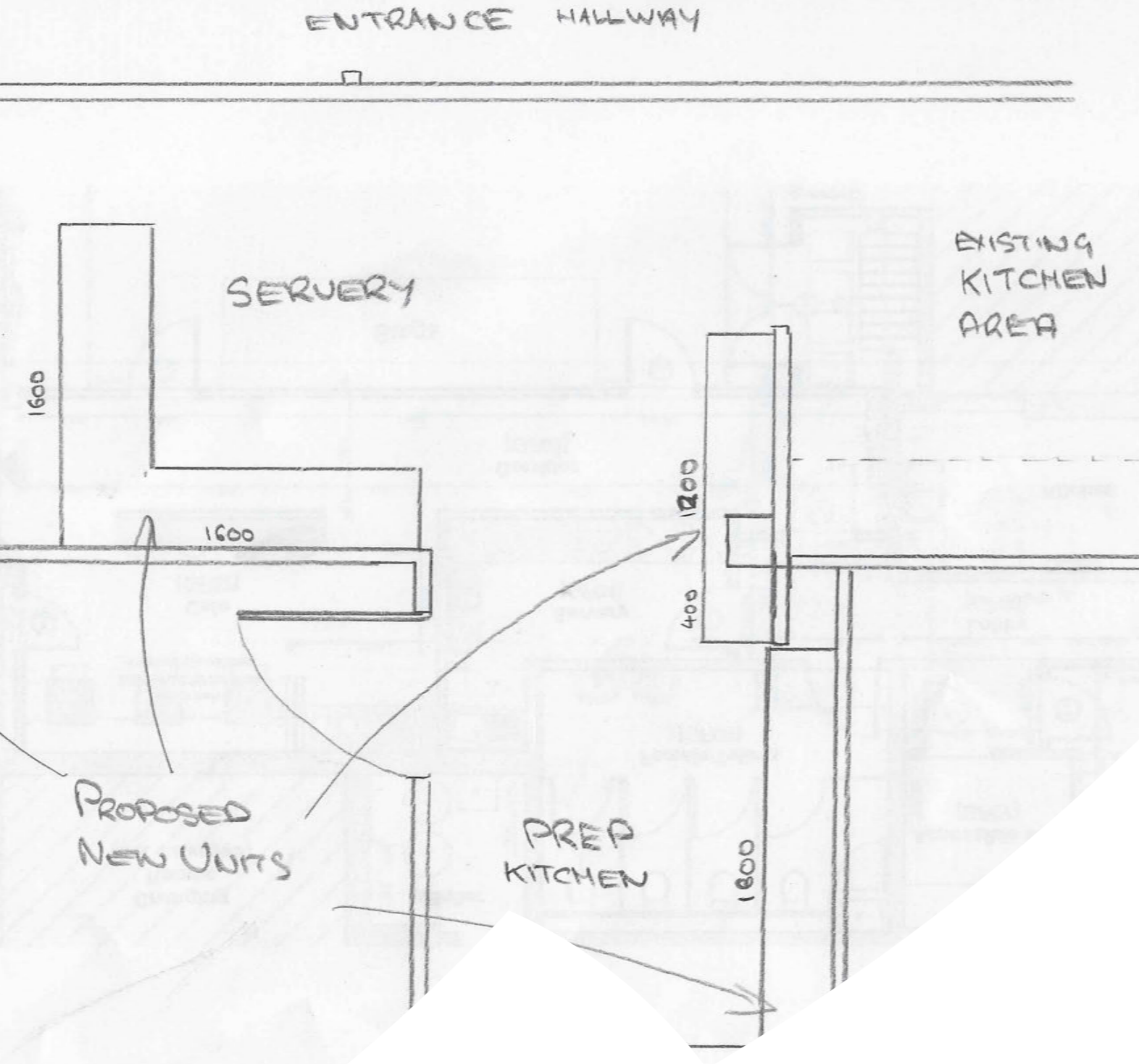
installation can be completed by the end of November 2025, and the fit out cost of the kitchen is not already included in the project.

### TYPES OF PROJECTS WE WANT TO FUND.

We know that club kitchens come in all shapes and sizes so if your application is approved, you will be assigned a Kitchen Designer from your local Howdens depot to design your kitchen and develop your project.

### EXAMPLES COULD INCLUDE:

- A straight like for like upgrade of your kitchen to modernise it, the layout is right, but the kitchen needs replacement.
- The creation of a servery and preparation areas to facilitate the high flow of customers.
- An external servery hatch so that spectators can access food and refreshments from outside of the building.
- Upgrading an existing metal container or modular building if it is watertight, already connected to the mains water (and waste drainage) and has an electricity supply.



## Getting started with your application

You can access the application form by clicking [here](#).

On completing the application, if you do not have all of the necessary documents to hand, you will have the option to return to the form at a later date to add further information/ documents using the application form link. Once you've added all your documents, please continue to complete the application and press 'Done' on the last page of the form. This will submit your application.

### WHAT WILL YOU NEED TO INCLUDE WITH YOUR APPLICATION?

- A dimensioned sketch plan of the space detailing size of room, including width, depth, ceiling height and estimated sqm measurements. Please highlight the location of existing plumbing, waste, water, electrics and gas connections
- Position of doors, radiators, windows, servery locations, and obstructions including width, depth and height measurements
- Photos of any existing kitchen, plumbing, electrical and gas services, as well as where the kitchen is to be fitted

- Evidence of security of tenure in the form of a signed lease, licence or freehold title document
- Landlord's consent to carry out the works
- Building and contents insurance
- Estimate of the total revenue generated by your kitchen currently (if applicable)
- How long the club has been on the site (written confirmation from landlord)

**You may be required to supply the following documents, depending on the age and condition of where you plan to install the kitchen. These could include:**

- A building condition survey of the existing building and accessibility of the facility.
- Building regulations approval where required
- Any relevant planning approvals
- Current food hygiene rating (if applicable)
- Food hygiene qualifications (if kitchen operator is already qualified)



# Getting started with your application (Cont'd)

## HOW WILL YOUR APPLICATION BE JUDGED?

Your application will be assessed during February and March 2025 with decision in April 2025. You might be contacted by the assessment team during this time to clarify the information you have submitted.

Due to the large amount of applications we received during the earlier application windows, projects will be prioritised based on the following criteria:

- Clubs that nominate a contractor / fitter that will install the kitchen on a voluntary basis (or a professional fitter funded by the club)
- Clubs who demonstrate the greatest need and whose project will have the greatest impact on their local community
- Clubs that provide opportunities across multiple pathways e.g. male, female and disability football
- How clubs intend to operate and maximise usage of their kitchen to generate additional income for the club

- Clubs that open up their kitchen for wider community use
- Clubs that have 3G pitches or multiple grass pitches on one site

## IF YOU ARE SUCCESSFUL WHAT HAPPENS NEXT

A letter will be sent to you with an award pack detailing the next steps.

Successful applications will need to be signed and accepted by two members associated with the club of which one should be the primary contact that completed the application form.

All relevant information relating to award acceptance will be shared in the award letter. You will be able to start your project once any pre-commencement conditions have been met (if applicable).

You will need to have an on-site meeting (or meetings) between the Club Representative, a representative from your local Howdens depot and your contractor / fitter to bring the project to life. This will include:

1. Completing a site survey to confirm kitchen dimensions, location and requirements
2. Confirming which kitchen range, worktops, sinks and taps, handles and appliances will be

used in the design

3. Confirming any pre-install work that the club needs to arrange and have carried out prior to the kitchen installation e.g. flooring, plumbing or electrical works
4. The representative from your local depot will develop the design and present it back to the club and contractor / fitter. This may take a couple of iterations but will be managed by the depot and the Game Changer Programme project team
5. Following sign off of the design, you will need to confirm to your local depot when any pre-fit work will be completed and when the fitter / contractor will be available to begin the installation
6. Upon confirmation of the install date, your local depot will ensure the stock is available and if appropriate arrange delivery. The representative at your local depot will be on hand to help if needed during the installation

As part of the award, the club will also be required to engage in communications promoting the Game Changer Programme such as social media content, an opening event and other publicity. Further details will be provided in the award pack.

# FA/Howdens – FAQs

## WHAT CAN WE USE THE AWARD FOR?

There is no monetary grant award, if successful you will be awarded a fitted kitchen from Howdens, this will include the cabinets, drawers, hinges, handles, frontals, cabinet trims, worktops, sinks, taps and appliances.

View range [here](#).

## OUR CLUB IS IN WALES OR SCOTLAND, ARE WE ELIGIBLE TO APPLY?

Visit [www.howdens.com](http://www.howdens.com) and search 'Game Changer Programme' to access application forms for Wales and Scotland.

## CAN THE PROJECT INCLUDE REFURBISHMENT OR REDECORATION OF THE BUILDING?

No, the club would be responsible for getting the kitchen area ready for the kitchen to be fitted and for any subsequent redecoration. The following is a non-exhaustive list of matters the club would be responsible for:

- Plumbing and electrical work including upgrades
- Flooring repairs or flooring installation
- Decoration after the install of the kitchen
- Any furniture (chairs, stools, tables etc)
- Freestanding small domestic appliances such as toasters, kettles, air fryers
- All structural works (moving walls, doors, windows)

- Ensuring that all electrical and gas works must be carried out by a qualified and certified contractor

## WHAT DO WE NEED TO ACCEPT OUR AWARD?

Successful applications will need to be signed and accepted by two members associated with the club of which one should be the primary contact that completed the application form. All relevant information relating to award acceptance will be shared in the award letter. In the event of a joint application, two signatures would be required from both organisations. You will be able to start your project once any pre-commencement conditions have been met (if applicable).

## IF WE ARE SUCCESSFUL, HOW LONG DO WE HAVE TO ACCEPT THE AWARD?

You will have **one** month to accept the award and **six** months to complete your project from the date of your award letter.

## HOW WILL THE CLUB BE MONITORED ONCE THE KITCHEN HAS BEEN INSTALLED?

Clubs will be surveyed upon completion of the project. We want to understand your experience of the programme so that we can continually improve our processes. On an annual basis we will contact you to find out the impact the kitchen has had on your club.

## ELIGIBILITY/ APPLICATION PROCESS

### WHEN IS THE APPLICATION WINDOW OPEN?

The window opens 2nd December 2024 and will close on 31st January 2025.

### IS THE APPLICATION PROCESS COMPLICATED? HOW LONG WILL IT TAKE TO FILL OUT THE APPLICATION FORM?

It is a very straightforward process and should take no more than 20 minutes to complete. However, you will need to gather and provide the supporting information below:

- A dimensioned sketch plan of the space detailing size of room including width, depth, ceiling height and estimated sqm measurements. Please highlight the location of existing plumbing, waste, water, electrics and gas connections
- Position of doors, radiators, windows, servery locations, obstructions including width, height and depth measurements
- Photos of any existing kitchen, plumbing, electrical and gas services as well as where the kitchen is to be fitted
- Evidence of security of tenure in the form of a signed lease, licence or freehold title document

- Landlord's consent to carry out the works
- Building and contents insurance
- Estimate of the total revenue generated by your kitchen currently (if applicable)
- How long your club has been on the site

### DO WE NEED TO APPOINT A BID CONSULTANT TO HELP US WITH THE APPLICATION?

No, there is no need to engage any professional support to complete this application. The application form is simple to complete and should only be completed by an authorised member of your organisation.

### ARE WE ELIGIBLE TO APPLY TO THE PROGRAMME?

England Football Accredited clubs who:

- Are 2 or 3 star Accredited
- Are 1 star Accredited and have a minimum of 6 teams with the ambition to become a 2 star Accredited club

In addition, the club must:

- Own their facilities freehold or
- Have a lease of 5 years or longer and have your landlord's consent to undertake the proposed works or
- Have a licence in place for the next 5 years

## FA/Howdens – FAQs (Cont'd)

with landlord consent to carry out the works. If you do not have the freehold or a lease of 5 years or longer then we would accept the freeholder as a joint applicant. This could include Local Authorities, County Football Associations, registered charities, not-for-profit companies, community interest companies (CIC) or other social enterprises, and town and parish councils.

Applications will be considered where the applicant has a lease of 5 years or longer but it contains a break clause in favour of the landlord. We will consider these types of applications if clubs can evidence a history of ongoing site usage.

### **WHICH ORGANISATIONS ARE INELIGIBLE TO APPLY TO THE PROGRAMME?**

- An individual or sole trader
- A national governing body
- A commercial / for-profit entity
- A club within the Premier League, Football League and Women's Football Pyramid (Tier 1 – 2)
- Educational establishments providing

facilities solely for their students

- A Local Authority
- A County Football Association
- A Professional Club Community Organisation
- If you have a senior team that plays in either the Men's National League system (steps 1-4) or the Women's Pyramid of Football (tiers 1-2) and your project is to improve kitchen / refreshment facilities solely for the benefit of the stadium pitch, then you cannot apply. Clubs who play at this level should apply for funding from the Premier League Stadium Fund to improve hospitality facilities. However, if the kitchen would be supporting a stadium 3G pitch with usage from grassroots teams then you would be eligible to apply. In addition, if you have a team that plays at the levels stated above, but have pitches on the same site or another site that serve grassroots teams, then you are also eligible to apply.

### **WHAT IF I DON'T NOMINATE A CONTRACTOR / FITTER ON MY APPLICATION?**

Priority will be given to applications that include a nominated fitter that will install the



**CRAFTED**  
**AT THE HEART OF YOUR COMMUNITY**

kitchen on a voluntary basis (or a professional fitter funded by the club). However, in the event of a club not being able to source a local tradesperson to install the kitchen, there is the option for Howdens to support the installation by identifying a suitable tradesperson for the club to work with.

#### **WHO CAN WE CONTACT ABOUT THE APPLICATION?**

We've developed this comprehensive set of Frequently Asked Questions that should answer your question. Please feel free to contact your County Football Association Facilities Team, they are on hand to support you during the application process. In addition, if you have any queries/issues regarding the application form, please contact [howdens@footballfoundation.org.uk](mailto:howdens@footballfoundation.org.uk)

#### **WHAT SECURITY OF TENURE IS REQUIRED?**

England Football Accredited clubs who:

- Are 2 or 3 star Accredited

- Are 1 star Accredited and have a minimum of 6 teams with the ambition to become a 2 star Accredited club

In addition the club must have:

- Own their facilities freehold or
- Have a lease of 5 years or longer and have your landlord's consent to undertake the proposed works or
- Have a licence in place for the next 5 years with Landlord consent to carry out the works

If you do not have the freehold or a lease of 5 years or longer then we would accept the freeholder as a joint applicant. This could include Local Authorities, County Football Associations, registered charities, not-for-profit companies, community interest companies (CIC) or other social enterprises, and town and parish councils.

Applications will be considered where the applicant has a lease of 5 years or longer, but it contains a break clause in favour of the landlord. We will consider

these types of applications if clubs can evidence a history of ongoing site usage.

#### **WE DELIVER ACTIVITIES AT MORE THAN ONE FACILITY; CAN WE APPLY FOR FUNDING FOR EACH OF THE SITES?**

No, each club can only apply once. If you have already received an award as part of the Game Changer Programme you are not eligible to apply again.

#### **HOW DO I APPLY?**

You can access the application form by clicking [here](#).

Applications made by third parties on a club's behalf, or through any third-party websites, will not be considered.

#### **WE'VE ALREADY RECEIVED FOOTBALL FOUNDATION FUNDING PREVIOUSLY, ARE WE ELIGIBLE TO APPLY?**

Yes, if you meet our eligibility criteria (detailed on page 22).

#### **WHEN WILL WE KNOW IF WE'VE BEEN SUCCESSFUL?**

We'll contact you with the decision on your application by the end of April 2025.

#### **IF SUCCESSFUL, WHEN WOULD THE KITCHEN NEED TO BE INSTALLED?**

During this window, the expectation is for kitchens to be installed between May 2025 - November 2025, subject to Howdens availability.

#### **WE HAVE ALREADY STARTED TO DO SOME OF THE WORK, WHAT SHOULD WE DO?**

If you've already started the installation of a kitchen, then you would be ineligible to apply. If the works relates only to the preparation of the kitchen area, then you may still apply.

#### **IF WE ARE UNSUCCESSFUL, WHEN WILL WE BE ELIGIBLE TO APPLY AGAIN?**

This is the third year of the partnership, therefore we are unable to guarantee future windows at this point.

#### **WHY HAS THE APPLICATION BEEN REJECTED?**

It is most likely your application has been rejected for one of the following reasons:

- Your club type isn't eligible

## FA/Howdens – FAQs (Cont'd)

- You may not have the required security of tenure for this programme
- You are not 2 or 3 star England Football Accredited club, or 1 star England Football Accredited club with a minimum of 6 teams and the ambition to become a 2 star England Football Accredited club
- You have a senior team that plays in either the Men's National League system (steps 1-4) or the Women's Pyramid of Football (tiers 1-2) and your project is to improve kitchen / refreshment facilities solely for the benefit of the stadium pitch
- The building condition isn't suitable for installation at this time

### **THERE ARE OTHER WORKS THAT WE NEED TO CARRY OUT – CAN WE APPLY FOR FUNDING FOR THOSE AS WELL?**

No, the Game Changer Programme is only for the kitchen which includes the cabinets, drawers, hinges, handles, frontals, cabinet trims, worktops, sinks, taps and appliances. There might be other funding available to support other works you might wish to carry out, but this will be separate to the Game Changer Programme.

### **CAN CLUBS APPLY IF THEY HAVE ALREADY BENEFITED FROM A PREVIOUS FOOTBALL FOUNDATION GRANT?**

Yes, but not a previous Howdens Game Changer Programme award.

### **WE HAVE A QUERY REGARDING THE GUIDANCE - WHO SHOULD WE CONTACT?**

Please feel free to contact your County Football Association Facilities Team, they are on hand to support you during the application process. In addition, if you have any queries/issues regarding the application form, please contact [howdens@footballfoundation.org.uk](mailto:howdens@footballfoundation.org.uk)

### **THE FUND**

#### **WHO HAS FUNDED THIS PROGRAMME?**

This programme is being funded by Howdens as a partnership with the FA. The application process is being administered by The Football Foundation who are funded by the FA, The Premier League and Government, via Sport England.

#### **WHAT IS THE AIM OF THIS FUND?**

The aim of the fund is to support England Football Accredited clubs to improve their kitchen facilities so that they can offer food and refreshments to players and spectators.

### **OTHER SUPPORT**

#### **CAN WE STILL APPLY FOR A FACILITY GRANT FROM THE FOOTBALL FOUNDATION?**

Yes, this does not affect your ability to apply for any other funding from the Football Foundation.

**We have ringfenced a budget for the fund of £1M per annum for the kitchens, based on the number of clubs that we anticipate applying and the size of the kitchens we expect to fund at least 100 kitchens per year.**

