



THE GFA PRE-SEASON GUIDE

GUIDEBOOK



Pre-Season Guide

In this guide we'll walk you through every step your club needs to take behind-the-scenes during the off-season. This guide will cover everything from pitch improvements, first aid restocking, safeguarding, marketing, player registration and more. Look out for exclusive deals that we offer through our partnerships.

Training and friendlies - that's your bag. For everything else, read on!

Contents

<i>Affiliation and County Cups</i>	03	<i>Veo camera and first aid supplies</i>	08
<i>Grass pitches</i>	04	<i>DBS checks and insurance</i>	08
<i>Linemarking services</i>	05	<i>Player registration and tournaments</i>	09
<i>Goalposts</i>	06	<i>Marketing and sponsorships</i>	10
<i>Safeguarding</i>	07	<i>Rest and GFA Handbook</i>	11

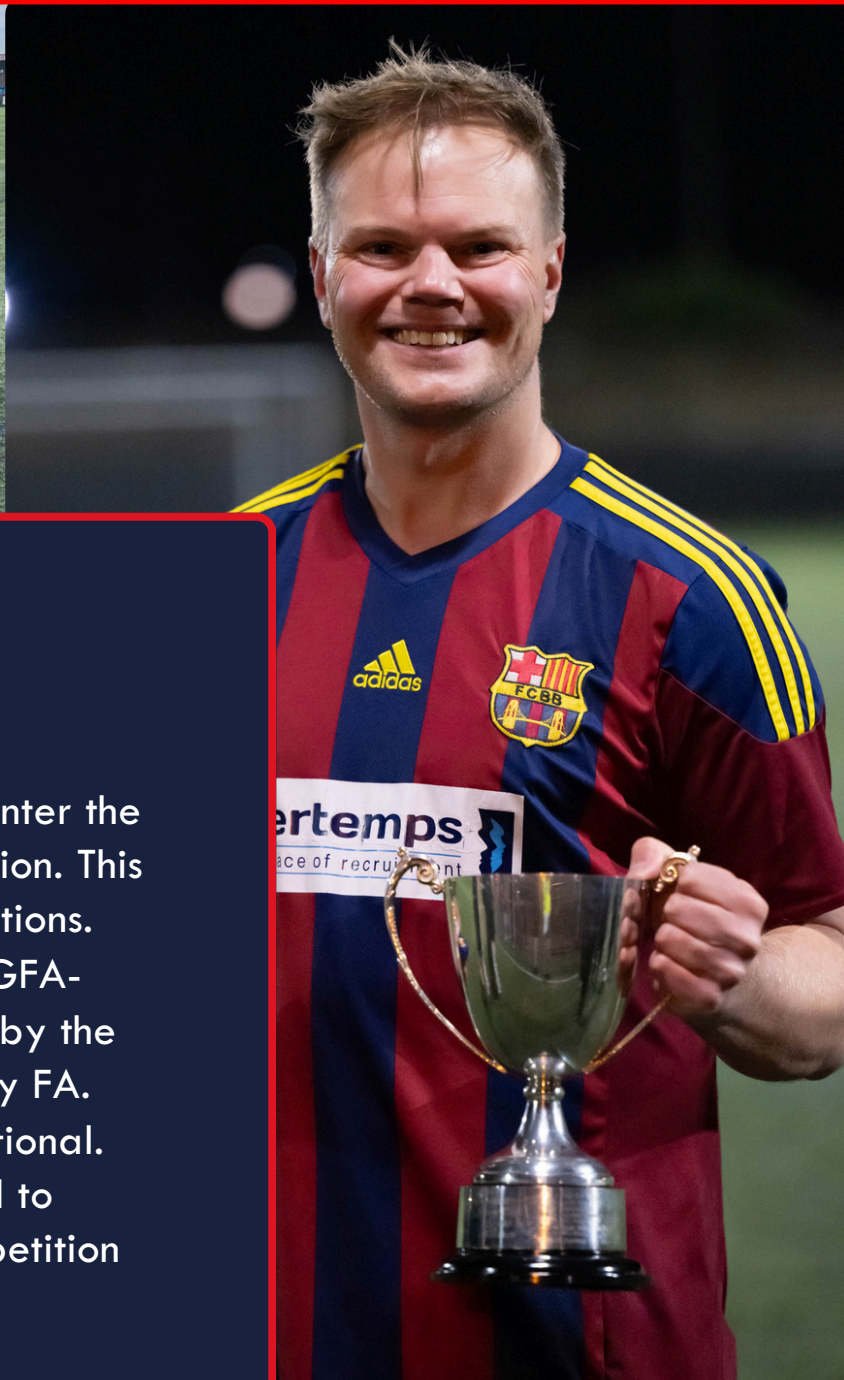
Affiliation

It's that time of year again - time to affiliate for the new season.

All Clubs now need to affiliate their teams through the [FA Clubs Portal](#).

Our website contains a comprehensive guide to affiliation, and you can always get in touch if you are struggling.

Affiliation information 2024/25



County Cups

Could this year be your year?

- All open-age (adult) teams must enter the appropriate County Cup competition. This enables entry to other FA competitions.
- County Cup entry is restricted to GFA-affiliated teams unless approved by the GFA and the team's parent County FA.
- Youth Cup competition entry is optional.
- All Clubs must seek GFA approval to enter a team in a County FA competition outside of Gloucestershire.

Grounds Improvements

There's no rest for our tireless grounds teams! It's time to start getting your pitches in shape for the new season. Have a look at the GMA's top tips for summer:

Operations for June

MOWING	IRRIGATION	AERATION (one operation when conditions allow)
DISEASE (check regularly for fungal disease)	HARROWING	BRUSHING / SWEEPING

Operations for July

REPLACE DIVOTS	MOWING	REPAIR WORN AREAS (goalmouths, sidelines)
AERATION (one operation when conditions allow)	ROTARY MOW (to clean up surface debris)	GROOMING / VERTICUTTING
APPLY FERTILISER	IRRIGATION	DISEASE (check regularly for fungal disease)
HARROWING	INSPECT GOALPOSTS AND GOAL NETS	INSPECT AND CLEAN MACHINERY
APPLY HERBICIDE (if necessary)	SET PITCHES AND MARK OUT LINES	BRUSHING / SWEEPING (daily if possible)



**Save 20%
on Turfix's
linemarking
services!**

Say goodbye to stringing out! Turfix Services is here to help you with your initial linemarking this summer.

Their team of experts can initial mark adult pitches in just 24 minutes thanks to the advanced GPS-guided technology that Turf Tank uses - saving you time and labour costs. As a result, clubs will have an easy-to-maintain and perfect pitch all year round.

The Turfix Services division is the only team capable of delivering the work you need and the resources required to maintain your pitch each season.

Our partnership with The Pitchmark Group allows GFA member clubs to access the absolute best price available.

Contact the team to save 20% on Turfix's linemarking service:

services@turfix.co.uk or 03333 580505



Goalposts

From 3 v 3 to full 11-side games, our partners Mark Harrod Ltd. have you covered for all your needs.

All the goals you see here are available in sizes 12x6, 16x7, 21x7, 24x8 - and there are many more besides!

Goals are sold in pairs, and include frames, nets, wheels (where applicable), and all fittings. All delivery charges are included and the prices are plus VAT.



Need funds?

The Football Foundation can offer grants of up to 75% for grassroots clubs to purchase goalposts.

**FOOTBALL
FOUNDATION**

Find out more



Steel socketed goals



Aluminium socketed box goals



Aluminium weighted easy-lift goals

Our County FA discount is available on all of these goals and many more. Save up to 20%!

For the best price possible, call Mark Harrod: **01785 594421**

Roles	SAFEGUARDING REQUIREMENTS FOR CLUBS WITH <u>OPEN-AGE</u> TEAMS				ENGLAND FOOTBALL
	FA DBS Check	Player Welfare Course	Safeguarding for Committee Members Course	Safeguarding Adults Course	First Aid Course
Club Secretary		● Recommended			
Club Chair		● Recommended			
Club Treasurer		● Recommended			
Club Welfare Officer (Including Assistants)	● Mandatory <i>(If U18s in Open-Age Teams)</i>	● Mandatory		● Recommended	
Other Committee Roles		● Recommended			
Team Manager/Coach (Including Assistants)	● Mandatory <i>(If U18s in Open-Age Teams)</i>	● Mandatory			<i>(If England Football Accredited, one per team).</i> ○ Mandatory Otherwise Recommended
Team Medic/First Aider (Including Assistants)	● Mandatory <i>(If U18s in Open-Age Teams)</i>	● Mandatory			● Recommended

Safeguarding must be up to date for all volunteers within your club.

Requirements vary for clubs playing disability football. [Click here](#) for full details.

Safeguarding

Get in touch with safeguarding concerns:
Email: Safeguarding@GloucestershireFA.com
GFA 24-hour emergency line: 07960 500 130

If a child is in immediate danger, **always call 999**

Roles	SAFEGUARDING REQUIREMENTS FOR CLUBS WITH <u>YOUTH</u> TEAMS				ENGLAND FOOTBALL
	FA DBS Check	Safeguarding Children Course	Safeguarding for Committee Members Course	Welfare Officer Course	First Aid Course
Club Secretary		● Recommended	● Mandatory		
Club Chair		● Recommended	● Mandatory		
Club Treasurer		● Recommended	● Mandatory		
Club Welfare Officer (Including Assistants)	● Mandatory	● Mandatory	● Mandatory	● Mandatory	
Other Committee Roles		● Recommended	● Recommended		
Team Manager/Coach (Including Assistants)	● Mandatory	● Mandatory			<i>(If England Football Accredited, one per team).</i> ○ Mandatory Otherwise Recommended
Team Medic/First Aider (Including Assistants)	● Mandatory	● Mandatory			● Recommended

7


[Claim your discount!](#)


~~£200 off~~
£300 off!
(until June 28th)

veo

Our partnership with Veo offers a discount to GFA-affiliated clubs in Gloucestershire and Bristol.

The use of a Veo camera opens up a wide range of possibilities for your club:

- Match recording**, including automatic highlights
- Understand your team with **stats and data analysis**
- Share clips** with players to aid development
- Live streaming** can allow friends and family across the globe to tune in, even if they can't make it on matchday

[Borrow the GFA camera](#)


We also have a Veo 3 available to use on a trial basis by clubs that may be interested in purchasing one for themselves. Click above to add your club to the waiting list.

First Aid Supplies

Summer is the perfect time for a restock of first aid kits. Our partnership with Koolpak means you can restock at a discounted price!

Koolpak usually only sell to trade but through this unique partnership, customers connected to Gloucestershire FA can access significant savings on a range of equipment and supplies.

With a brand new online portal and direct delivery from Koolpak to your door, ordering could not be easier.

[Visit the online shop!](#)


KOOL PAK

Summer favourites



20 ice packs

£10.32

Just 52p per unit

Team first aid kit

£27.76

Contains all
the essentials



DBS Checks

The FA recently launched a new DBS support site.

Along with loads of useful information, the site features a chat function to address all your DBS queries in real-time.

Visit the DBS support site



Insurance

Both Personal Accident insurance and Legal Liability Insurance by all clubs in order to protect the club and your players.

The off-season is a good time to review the policies your club currently holds and assess whether they cover everything you need.

Marsh Sport, our appointed insurance broker, provide insurance to clubs, teams, leagues and match officials with insurance products tailored to the needs of grassroots football.

For more information on what insurance is available please visit the [Marsh Sport website](#).



Player Registration

Players in Gloucestershire need to be registered on the Whole Game System to be eligible to play next season.

Registering players is a simple process. It verifies eligibility, provides insurance coverage, and collects playing stats for analysis. When registering, players provide personal details, pay registration fees, and submit necessary documentation such as proof of age or residency.

For help with registering players via WGS, please visit the FA Grassroots Technology Hub via the button below, where you'll find answers to just about any question you might have. And if you're still struggling then don't hesitate to give us a shout!



**WHOLE GAME
SYSTEM**

Find out more



Tournaments

Summer tournaments must be sanctioned by the GFA or The FA.

Insurance could be void if a tournament is not correctly sanctioned.

Referees and teams are strongly advised to request proof of sanction before participating in tournaments or summer festivals.

Find out more



DID YOU KNOW?

Your insurance will likely be invalid if you don't correctly sanction your tournament.

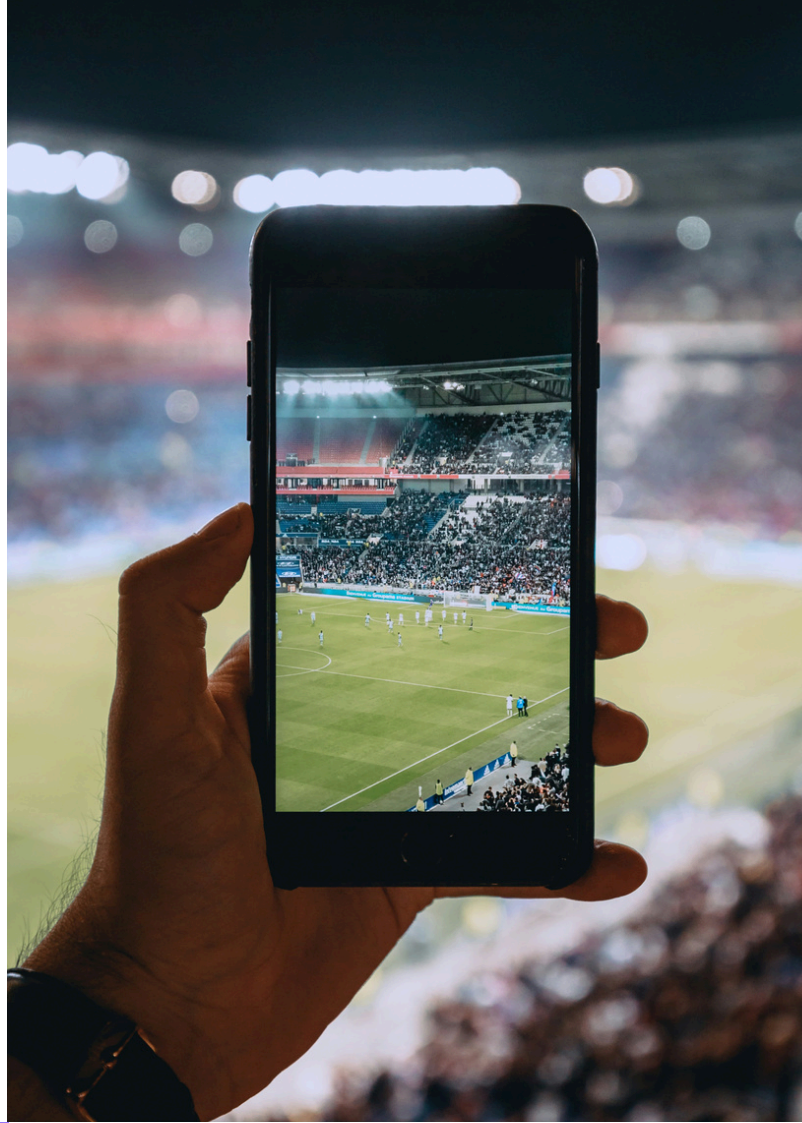
Marketing

Marketing and communications is essential for clubs to attract new players, establish a strong reputation in the local community and generate income (and we're not just writing this because it's the marketing team putting this together!)

It's an area that is often neglected, understandably so, as there are so many other jobs to do! But using the off-season to come up with a marketing plan is a great way to grow the club.

Think about how you want your club to appear on social media and try and put together a consistent routine for posting your fixtures, scores and players of the match. It's a good idea to assign this job to one or two people.

There are lots of great apps such as Canva to help level up your content!



Sponsorships

A sponsor is an individual or company who makes a payment to your club in exchange for agreed goods or services. They are the perfect supporter and can give your club the upper hand.

Companies often sponsor clubs for two main reasons: to support the local community or to boost their business, like selling more products or services through association with your club. They prefer reputable clubs offering value to the community.

Lots of businesses sponsoring football clubs have a personal connection, like the owner's child playing on the team. Start by reaching out to your members for potential sponsor leads.

There's a lot of scope for creativity here so think about what businesses will align with the club and maybe even consider offering sponsorship of individual players or offering advertising space at your ground.



Rest

Despite the extensive guide we've provided, one of the most important pieces of advice we can give is to rest.

Just like the body needs time to recover and recharge after a game, the mind craves its own halftime break.

Off-season rest isn't just a luxury; it's a necessity for mental health. It's a chance for players, coaches and volunteers to unwind, rejuvenate, and come back stronger than ever.

So embrace this opportunity for rest, knowing that this time is essential for your mental wellbeing and will ultimately set the stage for next season.

GFA Handbook

Look out for the GFA Handbook that offers everything you'll need to know for the rest of the season. We usually publish our handbook in August.

Additional Support

Need more info? Something we've missed?

Get in touch and the GFA will be happy to assist you further.

Email: Support@GloucestershireFA.com

Phone: 01454 615888

