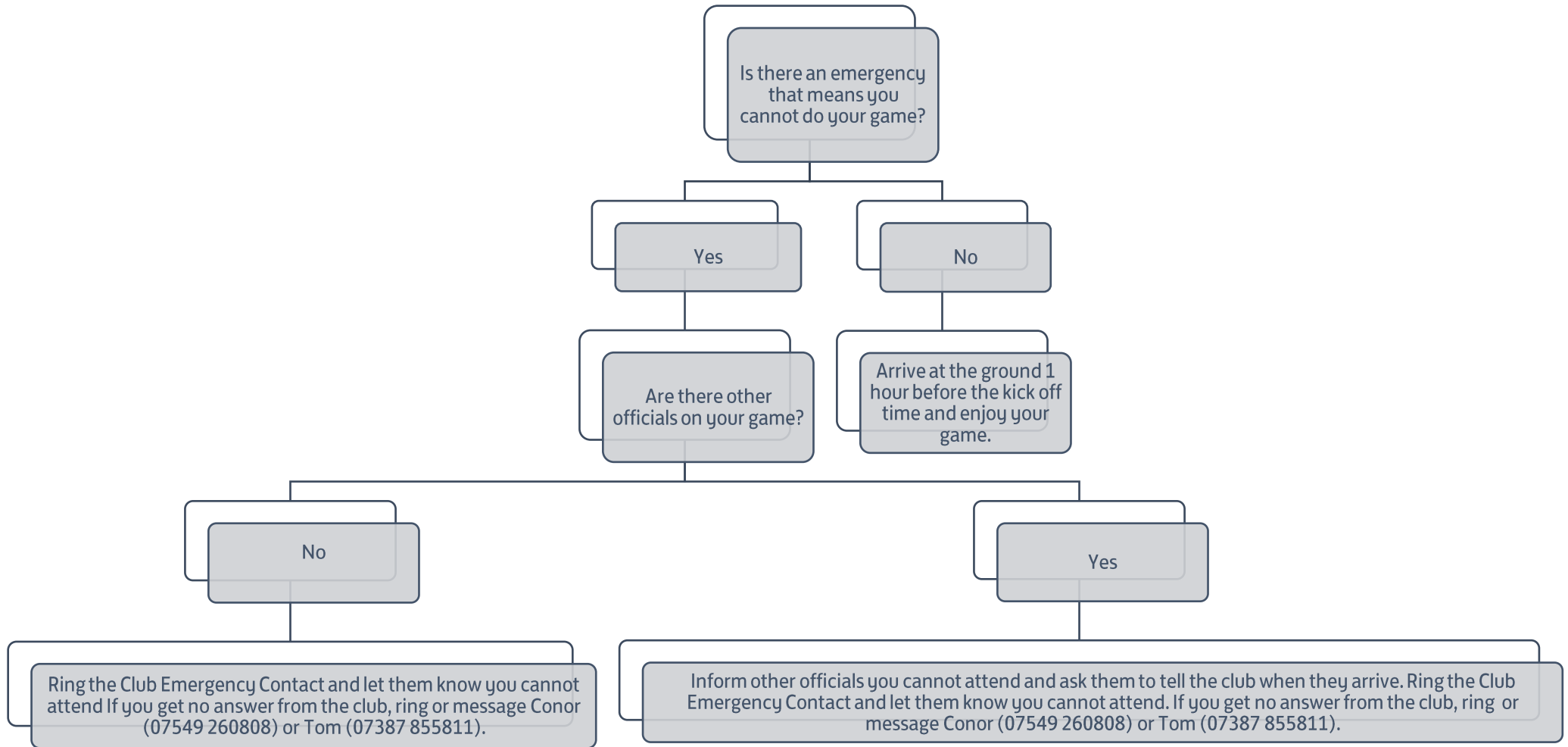




OUR GAME IN MANCHESTER
 >PLAY >VOLUNTEER >COACH >REFEREE





OUR GAME IN MANCHESTER
 >PLAY >VOLUNTEER >COACH >REFEREE

Appointments:	Games will be sent via email based around your availability that you have submitted on Pitchside.
Arrival time:	A minimum of 60 minutes before the scheduled kick-off time.
Warm Up:	30 minutes before the scheduled kick-off time on the pitch.
Pitch Arrival:	You need to be at your pitch and introducing yourself to the managers of the clubs no later than 15 minutes before kick-off.
Dress code:	Smart Tracksuit (MFA if possible) unless instructed otherwise.
Confirmation:	If you are working in a team of 3 (1x Referee, 2xAssistant), the Referee will make contact with you 24 hours before the day of the game.
Misconduct:	Any misconduct administered must be reported via email to appointments@manchesterfa.com with the subject set as 'Misconduct for (INSERT DATE AND GAME)'.

If at any point you are running late, it is important that you contact the Emergency Club contact to let them know of the situation. At times the clubs may ask you to kick-off earlier than scheduled. In these circumstances, Match Officials are expected to be as flexible as possible and kick-off at the new amended time.

Throughout the season, Coaches/Mentors may appear at the academies to offer their support, advice and guidance to the appointed Match Officials. Please use their experience and knowledge to address any issues/concerns you may have.

