



**ENGLAND
FOOTBALL**



**NORTH RIDING
COUNTY FA**

REFEREEING HANDBOOK

Season 2024-25



RESPECT

#WeonlydoPositive

CONTENTS

Introduction	4
Welcome From Our Chair	5
Referee Development Officer	6
Our Refereeing Strategy	7
Refereeing in North Riding	8
Meet Your Refereeing Team	9
Referee Support	10
Referee Registration	11
DBS & Safeguarding Guidance	12
U18 Match Official Guidance	13
Reporting Concerns	14
Referees Association	15
Social Media	16
Discipline	17
Mentoring Programme	18
Referee Progression Pathway	19
Development Opportunities	20
Centre of Refereeing Excellence (CORE)	21
The Development Group	22
The Women’s Development Group	23
The BAME Development Group	24
Image	25

CONTENTS CONT.

Competition Rules - North Riding FA Leagues	26
The North Riding Football League	27
York Football League	28
Newitts Beckett League	29
Scotts Storage Wensleydale Football League	30
The Timclad York Sunday Morning League	31
Manjaros Langbaugh League	32
Hillsprint Hambleton Football Combination League	33
Stockton Sunday League	34
Image	35
Teesside Junior Football Alliance League	36
York & District Youth Football League	37
Scarborough & District Minor Football League	38
City of York Girls Football League	39
Teesside Futsal League	40
North East Powerchair Football League	41
Middlesbrough FC Academy	42
York City FC Academy	43
North Riding Ability Counts league	44
North Riding Women's Recreational League	45
North Riding Walking Football League	46
North Riding FA County Cup Competitions	47
Key Contacts	48

INTRODUCTION

Welcome to this 2024/25 North Riding Referee Handbook, aimed at all North Riding Match Officials.

Those that have just completed the Referee's Course may find this handbook particularly useful.

This handbook is intended to provide you with all the important information that you need to assist you in getting started with your refereeing journey and beyond!



WELCOME FROM OUR CHAIR

“ On behalf of North Riding County Football Association, can I firstly congratulate you on successfully completing the Football Association Referees Course and becoming a registered referee with our Association. We at North Riding FA are proud to offer the support, help and guidance to all our referees in order for them to reach their full potential. This will be achieved, not only with your dedication and enthusiasm, but also with the assistance of the Coaches, Mentors, and Observers we have within our Excellent Referee Development Team, led by our Referee Development Officer Conor Ledgeway. Always remember help is only a phone call away, County FA Staff and our Volunteer Workforce are available for support and advice.

Good luck for the future, and we all look forward to seeing you taking those steps up the refereeing ladder and hopefully for some, television awaits.



”
-Barry Casterton
Chair of North Riding County FA



REFEREE DEVELOPMENT OFFICER

Conor Ledgeway

“ I am delighted that you have enrolled onto an FA Referee Course here at North Riding County FA and this handbook has been devised as a guide to all new referees and parents, alongside existing referees. I am hopeful that everything you could ever wish to know about refereeing in North Riding has been included to answer any questions or queries. I ask you to read through the information and if you do not understand anything, please feel free to contact me or a member of the Referee Development Team, and we will deal with all your queries.

You are embarking on a journey in refereeing that will see you meet many new people and make lots of long-standing friendships. I hope you develop your skills and improve along the way to whatever level of the game you aspire to reach, whether that be The Premier League or The North Riding League!

Please remember that I and the rest of the referee development team are here to support with no question too stupid to ask.

This handbook has been devised for you, so if you think we have missed anything out or could improve it then please let us know.

”

OUR REFEREEING STRATEGY

Over the past few years the North Riding County FA, and its volunteer workforce in the Referee Development Team, have significantly improved the image and quality of refereeing standards within the County. Our mentoring programme and Centre of Referee Excellence Group have helped many match officials to prosper. This has greatly benefited local, semi and professional football. Our strategy provides a clear focus on supporting the development of match officials at all levels, from all backgrounds. The North Riding County FA is fully committed to being an inclusive body which provides a clear structure on how to progress & develop as a match official with our key targets to recruit, retain, convert & support all referees.



WHAT DOES REFEREEING LOOK LIKE IN NRCFA?

- Match Officials
- Referee Observers, Mentors & Coaches
- Referee Tutors
- Referee Development Officer & dedicated Referee Leadership Team
- Referee Associations

WHAT DOES REFEREE DEVELOPMENT LOOK LIKE IN NRCFA?

- Expert training & support
- Further education
- Dedicated Referee Mentoring programme
- Centre of Referee Excellence (CORE) group
- National & International exchange programmes

WHAT DOES REFEREE GOVERNANCE LOOK LIKE IN NRCFA?

- Referee appointments through the various leagues Registration
- Yearly registration
- Discipline
- Referee Promotion Pathway
- Safeguarding
- Daily support



MEET YOUR REFEREEING TEAM



CONOR LEDGEWAY

Referee Development Officer
conor.ledgeway@northridingfa.com
+44 (0) 1642 717770 Option 3



AIMEE LEONARD

Football Operations Officer
aimee.leonard@northridingfa.com
+44 (0) 1642 717770



LESLEY CLARK

Discipline Officer
lesley.clark@northridingfa.com
+44 (0) 1642 717770

OTHER SUPPORTIVE STAFF



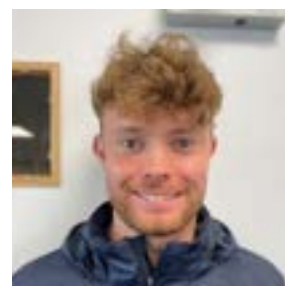
CLAIR SHIELD

Designated Safeguarding Officer
clair.shield@northridingfa.com
+44 (0) 1642 717770



CHRIS WOOD

Football Development Officer
chris.wood@northridingfa.com
+44 (0) 1642 717770



CALLUM GUY

Football Administration Assistant
callum.guy@northridingfa.com
+44 (0) 1642 717770



THE REF STOP
REFEREE KIT & EQUIPMENT

Official kit and equipment supplier to
North Riding FA Match Officials

USE CODE NORTHREFS10 FOR 10% DISCOUNT ONLINE

www.therefstop.co.uk



REFEREE SUPPORT

North Riding FA is keen to ensure that we provide all our match officials with the best possible support.

As well as contacting the team by phone or email we also have a lot of information on our website. Please don't think any matter is too small as there is always someone that can help...whether that be RDO Conor, Safeguarding Officer Clair, The Referees Association, or our Mental Health Champions.

There is information around support for mental health, fitness and nutrition as well as general match day guidance which can be accessed via the tabs below.

MENTAL HEALTH CHAMPIONS

FITNESS & NUTRITION

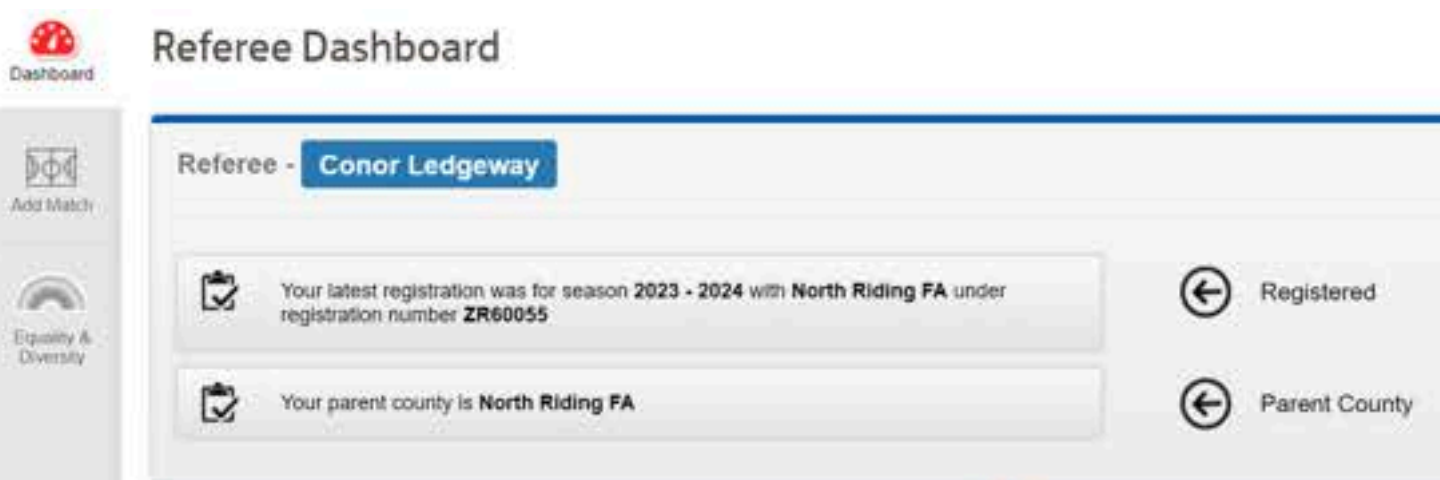
MATCH DAY GUIDANCE



REFEREE REGISTRATION

Every season you are required to renew your referee registration so that you are affiliated to North Riding County FA. YOU MUST do this in order to referee any level of football.

Registration usually occurs throughout the summer in the build up to the start of the new season (1st June onwards) and this can be done by logging into The Whole Game System and clicking on the referee registration tab. The cost of this is £20 unless you are a brand new referee in which case your first year is free (but then you have to register each year after that) or over 70 years of age. Insurance can also be purchased for an optional £5. The image below shows you what it will look like on whole game once you are registered with your registration number and parent County FA.



The screenshot shows the 'Referee Dashboard' for a user named 'Conor Ledgeway'. On the left, there is a sidebar with icons for 'Dashboard', 'Add Match', and 'Equality & Diversity'. The main content area displays the user's registration details:

- Referee - **Conor Ledgeway**
- Your latest registration was for season **2023 - 2024** with **North Riding FA** under registration number **ZR60055**. To the right of this entry is a circular arrow icon and the text 'Registered'.
- Your parent county is **North Riding FA**. To the right of this entry is a circular arrow icon and the text 'Parent County'.



DBS & Safeguarding Guidance

DBS Requirements

Once you have turned 16 years of age you MUST hold an FA DBS in order to be eligible to officiate within youth football. It is your responsibility to attain and remain DBS compliant. DBS' expire after 3 years. You will receive notifications regarding your DBS once you turn 16 from our Safeguarding Officer Clair Shield and receive FA notifications of expiry well in advance thereafter for you to action a new DBS application

The process to obtain a DBS is relatively straightforward. Simply follow the attached guide step

by step, and complete your online application with personal details and selecting three ID documents. You will need to arrange to meet a verifier in person with your ID documents and then complete payment (£10 admin fee).

Safeguarding Education

Furthermore, all referees are required to complete The FA's Safeguarding For All online Course every 2 years. The link below will take you to the free online course which will take around 45 minutes to complete. Again it is your responsibility to ensure this is updated when required in order to remain eligible to officiate and register for the upcoming season. If you have any questions please contact support@northridingfa.com

[North Riding DBS Guide](#)

<https://learn.EnglandFootball.com/courses/safeguarding/safeguarding-for-all>

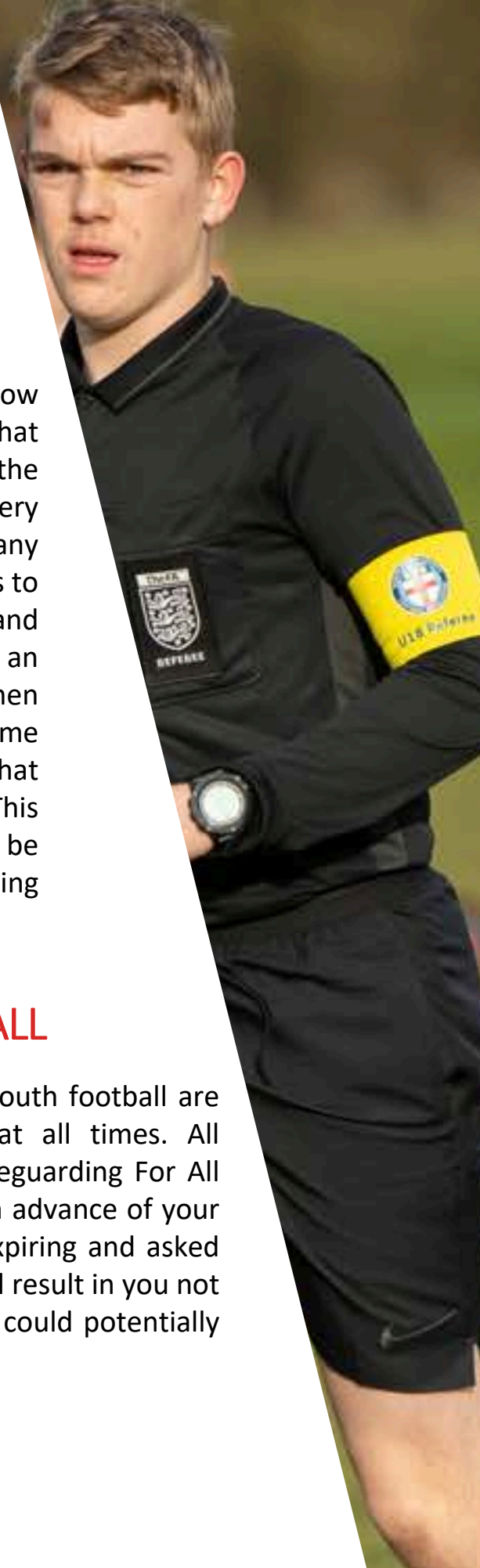


U18 MATCH OFFICIAL GUIDANCE

We provide all U18 referees with a branded yellow armband to help raise awareness to everyone that somebody still considered a child is refereeing the game from a safeguarding perspective. It is very strongly recommended that you wear this in any game that you referee. The aim of this scheme is to improve the match day experience and environment for our U18 referees. If you face an issue from a discipline perspective in a game then please ensure you report it on The Whole Game System and in your misconduct report state that you were wearing your yellow U18s armband. This is because the sanction against the offender will be more severe as it is a breach of safeguarding conduct.

REFEREEING YOUTH FOOTBALL

As a reminder, it is imperative all referees in youth football are required to remain safeguarding compliant at all times. All referees must hold an in date FA DBS and Safeguarding For All qualification. You will receive FA notifications in advance of your FA DBS & Safeguarding For All qualifications expiring and asked to update these. Failure to remain compliant will result in you not being eligible to officiate in youth football and could potentially be suspended.



Reporting Concerns

Reporting Concerns

Any concern big or small, we ask you report to us as soon as possible. If you see anyone behave in a physical or verbal way you believe is threatening or makes a young person (including yourself) feel scared or sad? IT IS YOUR RESPONSIBILITY TO REPORT THIS. Even if they feel the behaviour may not meet a safeguarding/discipline threshold please report so we are aware and can determine action to take.

You may see an adult act inappropriately towards a child, young person or adult at risk, anything that 'doesn't seem quite right' let someone know. Each club has a club welfare officer, some clubs have Matchday Assistants or alternatively report to safeguarding@northridingfa.com or online [here](#)

Matchday Assistants

You may visit some clubs who have Matchday Assistants - people in high-vis vests who are there to support you and be a point of contact to direct and guide you your pitch and facilities, etc. Matchday Assistants are there to help you feel welcome and comfortable so please don't be shy in approaching them for help.



THE REFEREE'S ASSOCIATION

The Referee's Association is another way to enhance your learning and development as a referee.

The National Referees Association is made up of numerous local associations that all serve to provide a social meeting point for referees in their local area.

In North Riding, our only operating RA is York Referees Association who meet on the first Thursday of each month at York Hospital Social Club 7:30-9:30PM. They are a brilliant association who regularly have over 30 attendees at each meeting, whereby they will get high profile guest speakers from the elite levels of the game, put on social events and share local football experiences. It is strongly recommended that you join your local association to supplement and enhance your learning as a referee. They are also a great support network as they provide insurance on your refereeing kit and have numerous other benefits. Please go to <https://www.the-ra.org/> in order to see the full range of benefits that The RA has to offer.



YORK REFEREE'S ASSOCIATION

SOCIAL MEDIA

Social media is a great tool to promote positive refereeing stories and search for games.

However please be aware that as a match official you should be careful about what you post, such as opinions on games, players and clubs that you are both involved with and other games. We have a social media policy linked [HERE](#) should you need any further information.

You can follow us on various platforms:



[@NRCFAREFDEV](#)



[North Riding FA Refereeing](#)



<https://www.northridingfa.com/referees>

DISCIPLINE

Submitting discipline (yellow/red cards/misconduct) is an important role of a match official and this can be easily done through the Whole Game System (WGS) <https://wholegame.thefa.com/>

It is important any reports are submitted with 48hrs of the game so that any discipline can be processed.

When carrying out your duties as a referee please ensure that when you caution, dismiss or report any participants that you get their full name at the time rather than rely on any team sheets or websites. Don't forget managers/coaches can be cautioned/sent off as non-playing participants which also needs to be included in your report.

Any offences by managers, coaches or spectators/any discrimination or any incidents outside of a normal caution/dismissal need to be reported as any extraordinary misconduct report on the WGS. Also be aware that sin-bins are in operation for dissent only cautions with guidance on these linked below.

Below is some links to help you with any misconduct report:

TEMPORARY DISMISSALS (SIN BINS)

FA REFEREE GUIDE TO REPORT WRITING

[VIDEO GUIDE TO WGS](#)

NORTH RIDING WGS POWERPOINT

REPORTING DISCRIMINATION

Report all discipline – failure to do so may result in an FA charge

MENTORING PROGRAMME

North Riding County FA offers a dedicated mentoring programme that is led by our North Riding Head of Mentoring, Geoff Mann (pictured below). With a dedicated mentor workforce across the county we offer fantastic dedicated support to our newly qualified referees, who will all receive a mentor who will act as a point of contact. It is hoped that this will make new referees feel supported and increase our retention of referees.

Our mentors provide the following support:

- New referees first point of contact
- Will endeavour to try and make on of the new referees first 5 games
- Support referees in contacting local referees appointments secretaries to get games
- Answer any questions from the referees or parents/guardians

From Season 24/25 we are teaming up with our partners at The Centre Circle App to help with the smooth delivery of our mentor programme. All new referees and mentors need to download The Centre Circle App from the app store and create an account.



REFEREE PROGRESSION PATHWAY

The referee promotion pathway was revised by the FA in season 22/23 which would benefit match officials in that it no longer became a seasonal window.

Instead promotions can now run over into new seasons and is split into 4 opportunities to join or be promoted during a season.

It provides you as a referee with greater flexibility and control over your promotion and referee pathway.

All information relating to the referee promotion pathway can be found on our website:



REFEREE PROGRESSION PATHWAY





CPD FOR REFEREES/MENTORS/MATCH DAY COACHES/OBSERVERS

2024/25

DEVELOPMENT OPPORTUNITIES

We have a number of different groups and CPD opportunities throughout each season for all referees to develop and learn. Below highlights our Centre of Refereeing Excellence Group (CORE), Development Group, Female Development Group, & BAME Development Group.

1. CORE Group - 9 meetings per season. Practical and classroom sessions. Invitation only based on pre-season selection event.
2. Development Group - 4 meetings per season. Classroom only sessions. Invitations based on pre-season applications. Opportunity to referee at Middlesbrough/York Academy games.
3. Female Development Group - 4 meetings per season. Practical and classroom sessions. Invitations based on pre-season applications.
4. BAME Development Group - 3 meetings per season. Practical and classroom sessions. Invitations based on pre-season applications.

CENTRE OF REFEREEING EXCELLENCE (CORE)

Our Centre Of Referee Excellence (CORE) Group serves as a Talent ID Programme whereby referees that show potential to reach the higher levels of the game are given specific development from our CORE Coaching Team. Anyone who wishes to apply will have to pass an assessment event held in pre-season for selection purposes. We expect CORE referees to show excellence both on and off the field with successful applicants expected to be able to pass a fitness test, laws of the game test, clip analysis, and keep in regular contact with their allocated coach. County CORE Referees will then feed into The FA CORE Programme on a national level by recommendation from The County FA.



THE DEVELOPMENT GROUP

Our Development group sits just underneath our CORE programme and is aimed at officials who want to involve themselves in some extra development alongside any general CPD sessions. This group is application based throughout pre-season with current Level 3 & 4 referees facilitating the classroom sessions. Whether you are an experienced referee or quite new into refereeing, this group will have something that will help you develop and is a stepping stone into the CORE Group. Development group referees will also be given the chance to officiate academy football at Middlesbrough FC and York City FC during the season.



WOMEN'S DEVELOPMENT GROUP

Our Women's Development group serves to support female match officials who would like some extra development and support. We hope this group can grow our number of female referees, giving each of them a specific support network of other females in refereeing. This group is application based throughout pre-season with current ETP Regional Lead Sophie Wood overseeing the group for both practical and classroom sessions. Members of this group can also be in the development or CORE group. Female development group members will also have the opportunity to officiate academy games at Middlesbrough FC and York City FC.



BAME DEVELOPMENT GROUP

Our BAME Development group serves to support BAME match officials who would like some extra development and support. We hope this group can grow our number of historically underrepresented black, asian, and mixed heritage referees, giving each of them a specific support network of other BAME referees. This group is application based throughout pre-season with our EDI ambassador Mohammed Ghafoor overseeing the group for both practical and classroom sessions. Members of this group can also be in the development or CORE group. BAME development group members will also have the opportunity to officiate academy games at Middlesbrough FC and York City FC.





COMPETITION RULES

NORTH RIDING COUNTY FA LEAGUES

The below pages highlight relevant information for the majority of leagues and County Cups that you could act as a referee or assistant referee on across the County in Middlesbrough, York, Scarborough and The Dales. Please read this information carefully and if you believe anything is missing, or would like further clarification then please contact the leagues directly, using the contact details provided.



NORTH RIDING FOOTBALL LEAGUE

(Sat- PM)



Match Balls

Adult = Size 5 match balls
All provided by the home club

League contact

Paul Stalker (Secretary)
paul.stalker@northridingfa.com

Substitutes

7 from 7, rolling substitutions permitted

Teamsheets

Completed on matchday app.
Referee to ask for names of subs prior to kick off.

MATCH FEES

League/Cup	Referee	Assistant Referee	Travel Expenses	Paid by
Premier Division	£35	£20	30p per mile	Split 50/50
Division 1	£35	N/A	30p per mile	Split 50/50 up to a max of £25 each
Division 2	£35	N/A	30p per mile	Split 50/50 up to a max of £25 each
Womens	£35	N/A	30p per mile	Home Club

DURATION

League/Cup/Age group	Duration (mins each way)	Extra time (mins each way)	Penalties (yes/no)	Appointed by
League games	45 mins	N/A	N/A	League- Paul Stalker
Macmillan Bowl	45 mins	N/A	Yes	League- Paul Stalker
Lou Moore Trophy	45 mins	N/A	Yes	League- Paul Stalker
NRFL Challenge Cup	45 mins	N/A	Yes	League- Paul Stalker

(Sat- PM)



Match Balls

Home team to provide match ball

Teamsheets

Team sheet provided by both teams before kick off

Website

yorkfootballleague.co.uk

Substitutes

Rolling subs, 5 from 5

League contact

Colin Atkinson

york.league@btinternet.com/

07824771354

Saturday Referee Appointments- Matt Cottingham

matt.cottingham@northridingfa.com

Sunday Referee Appointments - Craig Atkin 07450258876

Craig.Atkin@pbhrail.com

MATCH FEES

League/Cup	Referee	Assistant Referee	Travel Expenses	Paid by
	£35 to not exceed £50 with travel expenses	N/A	30p per mile	Home Club but split between both teams
All Other Divisions	£30 to not exceed £45 with travel expenses	N/A	30p per mile	Home Club but split between both teams
Under 19s	£30	N/A	30p per mile	Home club

DURATION

League/Cup/Age group	Duration (mins each way)	Extra time (mins each way)	Penalties (yes/no)	Appointed by
League Cup	45 mins	N/A	Yes	League appointed by Matt Cottingham

NEWITTS BECKETT FOOTBALL LEAGUE

(Sat- PM)



Match Balls

Home team to provide match ball

Substitutes

5 from 5 but NOT rolling

League contact

Andrew Roup
Thebeckettleague@gmail.com
07854416379

Teamsheets

Team sheet provided by both teams 30 mins before kick off

MATCH FEES

League/Cup	Referee	Assistant Referee	Travel Expenses	Paid by
League/Cup	£30 to not exceed £50 with travel expenses	N/A	40p per mile	Home Club but split between both teams

DURATION

League/Cup/Age group	Duration (mins each way)	Extra time (mins each way)	Penalties (yes/no)	Appointed by
League Cup	45 mins	N/A	Yes	League appointed by Matt Cottingham matt.cottingham@northridingfa.com

SCOTTS STORAGE WENSLEYDALE FOOTBALL LEAGUE

(Sat- PM)



Match Balls

Home team to provide match ball size 5

Teamsheets

Electronically

Substitutes

Rolling subs, 5 from 7

League contact

Paul Dinsdale, paul.dinsdale@carrs-billington.com, 07359 187028
Miles Middleton (fixtures secretary),
miles.middleton@bishoptonvets.co.uk,
07739 997086

MATCH FEES

League/Cup	Referee	Assistant Referee	Travel Expenses	Paid by
League & Cup	£25 to not exceed £50 with travel expenses	£20 to not exceed £40 with travel expenses	35p per mile	Home Club but split between both teams

DURATION

League/Cup/Age group	Duration (mins each way)	Extra time (mins each way)	Penalties (yes/no)	Appointed by
League	45 mins	N/A	N/A	League appointed
Dales Cup & Medals Shield	45 mins	15 mins	Yes	League appointed

THE TIMCLAD YORK SUNDAY MORNING LEAGUE

(Sun- AM)



Match Balls

Home team to provide size 5 match ball.

Substitutes

5 from 5, rolling subs

Teamsheets

Handed to match official 30 minutes before kick off

Duration

90 Minutes

League contact

Matt Cottingham (Secretary) 07736323771
mattedcotts@hotmail.co.uk

Craig Atkin (Referee Appointments) 07450258876
Craig.Atkin@pbhrail.com

MATCH FEES

League/Cup	Referee	Assistant Referee	Travel Expenses	Paid by
League	£35	N/A	30p per mile	Home Club but split between both teams

DURATION

League/Cup/Age group	Duration (mins each way)	Extra time (mins each way)	Penalties (yes/no)	Appointed by
League Cup	45 mins	N/A	Yes	League appointed by Craig Atkin

MANJAROS LANGBAURGH LEAGUE

(Sun- AM)



Match Balls

Home team to provide size 5

Teamsheets

Subs names given to the referee verbally before the game.

Substitutes

5 subs out of 7 named but can be rolled

League contact

Jonny McNaughton 07944954632
Langbaughcommittee@hotmail.com

MATCH FEES

League/Cup	Referee	Assistant Referee	Travel Expenses	Paid by
Division 1	£35	N/A	Fee inclusive of travel	Home Club

DURATION

League/Cup	Duration (mins each way)	Extra time (mins each way)	Penalties (yes/no)	Appointed by
Division 1	45	None	Yes	League

HILLSPRINT HAMBLETON FOOTBALL COMBINATION LEAGUE

(Sun- AM)



Match Balls

Home team to provide size 5

Teamsheets

Teamsheets provided by league and filled in at end of match

Substitutes

5 subs out of 5 named but can be rolled

League contact

Helen Griffiths (League Secretary)
helen_griffiths1@outlook.com

Chris Walker (Referee Appointments)
chris_walker1986@hotmail.com

MATCH FEES

League/Cup	Referee	Assistant Referee	Travel Expenses	Paid by
League & Cup	£30	N/A	Fee inclusive of travel	Home Club but split equally by both teams

DURATION

League/Cup	Duration (mins each way)	Extra time (mins each way)	Penalties (yes/no)	Appointed by
Cup	45	15	Yes	League -Ian Richardson

STOCKTON SUNDAY LEAGUE

(Sun- AM)



Match Balls

Home team to provide 2 match balls

Substitutes

7 allowed

Teamsheets

Each team submits a match sheet to the referee before kick off

League contact

Ken Clark 07504303153
ken.clark@stocktonsundayleague.org.uk
www.stocktonsundayleague.org.uk/

MATCH FEES

League/Cup	Referee	Assistant Referee	Travel Expenses	Paid by
Divisions & Cup	£35	N/A	Fee inclusive of travel	Home Club

DURATION

League/Cup	Duration (mins each way)	Extra time (mins each way)	Penalties (yes/no)	Appointed by
Divisions & Cup	45	None	Yes	League



FOR ALL

RESPECT

TEESSIDE JUNIOR FOOTBALL ALLIANCE LEAGUE (TJFA)

(Sat/Sun)



Match Balls

U7-U10 Size 3 match balls

U11-U14 Size 4 match balls

U15+ Size 5 match balls

All provided by the home club

League contact

Kevin Close 01642030032

kevin@tjfa.co.uk www.tjfa.co.uk

Substitutes

U7 & U8 –Roll on/Roll off, 5 from 5

U9+ Roll on/Roll off, 7 from 7

Teamsheets

Match day App by both teams

Subs to be given to referee prior to KO

MATCH FEES

Age Group	Referee	Assistant Referee	Travel Expenses	Paid by
U7 to U10	£15	N/A	Inclusive of fee	Home Club
U11 to U12	£20	£15	Inclusive of fee	Home Club
U13 to U16	£25	£15	Inclusive of fee	Home Club
U17 to U18	£30	£15	Inclusive of fee	Home Club

DURATION

League/Cup/Age group	Duration (mins each way)	Extra time (mins each way)	Penalties (yes/no) (All age groups are 5 penalties)	Appointed by
U7 to U8	20	N/A	Yes	Home Club
U9 to U10	25	N/A	Yes	Home Club
U11 to U12	30	N/A	Yes	Home Club
U13 to U14	35	N/A	Yes	Home Club
U15 to U16	40	N/A	Yes	Home Club
U17	45	N/A	Yes	Home Club
U18	45	N/A	Yes	League Appointed



Match Balls

U8/9/10 - Size 3

U11/12/13/14- Size 4

U15/16- Size 5

Teamsheets

Team sheet handed to the referee prior to kick off.

League contact

David Wilson 07513 080316 dpwilson1@virginmedia.com

Andy Kay (Referee Appointments) 07833 501441 ydyflrefs@hotmail.com

Substitutes

5 subs in U12 to U18.

Rolling subs allowed.

7 subs in 7 v 7 and 5

subs in 5 v 5 all

rolling.

MATCH FEES

League/Cup	Referee	Assistant referee	Travel Expenses	Paid by
11 v 11	£25	N/A	30p per mile	Home Club
9 v 9	£20	N/A	30p per mile	Home Club
7 v 7	£15	N/A	30p per mile	Home Club

League/Cup/Age group	Duration (mins each way)	Extra time (mins each way)	Penalties (yes/no)	Appointed by
U7-U8	20 mins	N/A	N/A	Club appointed
U9-U10	25 mins	N/A	N/A	Club appointed
U11-U12	30 mins	N/A	N/A	League appointed by Andy Kay
U13-U14	35 mins	N/A	N/A	League appointed by Andy Kay
U15-U16	40 mins	N/A	N/A	League appointed by Andy Kay

SCARBOROUGH & DISTRICT MINOR FOOTBALL LEAGUE

(Sun-AM/PM)



Match Balls

U7-10 Size 3

U11-14- Size 4

U15+ Size 5

Teamsheets

Team sheet via FA Matchday App

League contact

Karen Louth (Secretary) Karen.louth@scarboroughminorleague.co.uk

George Roberts (referee appointments U12+

George.Roberts@scarboroughminorleague.co.uk

07985266335

Substitutes

U7s-U11 no maximum number of named subs.

U12+ 5 named subs

Rolling subs allowed

MATCH FEES

£20.00 inclusive of travel expenses (paid by the home club) either by cash or bank transfer on the day.

DURATION

League/Cup/Age group	Duration (mins each way)	Extra time (mins each way)	Penalties (yes/no)	Appointed by
U7-U8	20 mins	N/A	N/A	Club appointed
U9-U10	25 mins	N/A	N/A	Club appointed
U11-U12	30 mins	N/A	N/A	League appointed
U13-U14	35 mins	N/A	N/A	League appointed
U15-U16	40 mins	N/A	N/A	League appointed

CITY OF YORK GIRLS FOOTBALL LEAGUE (CYGFL)

(Sat- AM)



Match Balls

U13-14 Size 4

U15-U18 Size 5

Teamsheets

Via full time website before the game

League contact

David Winterburn 07833922860

secretary@cygfl.com

Substitutes

5 from 5. Rolling subs are permitted.

MATCH FEES

League/Cup	Referee	Assistant Referee	Travel Expenses	
11 v 11	£25	N/A	30p per mile	Home Club
9 v 9	£20	N/A	30p per mile	Home Club

DURATION

League/Cup/Age group	Duration (mins each way)	Extra time (mins each way)	Penalties (yes/no)	Appointed by
U7-U8	20 mins	N/A	N/A	Club appointed
U9-U10	25 mins	N/A	N/A	Club appointed
U11-U12	30 mins	N/A	N/A	League appointed by Andy Kay
U13-U14	35 mins	N/A	N/A	League appointed by Andy Kay
U15-U16	40 mins	N/A	N/A	League appointed by Andy Kay
U18s	45 mins	N/A	N/A	League appointed by Andy Kay



Match Balls

Futsal ball given by league

Teamsheets

Online matchday app

League contact

Steven Phillips 07799652312

teesside.futsal@gmail.com

Substitutes

Rolling subs (no referee permission needed)

MATCH FEES

Fees to be paid by bank transfer after the night. Most referees usually do 2/3 games an evening. Speak to Steven for more information on fees per game.

DURATION

Futsal game is 40mins for all age groups. 20 mins each half. No extra time within the league. If it's a cup game it will go direct to best of three penalties.

NORTH EAST POWERCHAIR FOOTBALL LEAGUE

(Sun-AM)



Match Balls

Size 9

Substitutes

4 a side, 4 subs max.
Rolling subs allowed

Teamsheets

Online

League contact

Carolyn Bean

northeastpfl@gmail.com

MATCH FEES

League/Cup	Referee	Assistant referee	Travel Expenses	Paid by
League	£10 for each game (most refs do 3 a time)	N/A	40p per mile	Paid by treasurer

DURATION

League/cup	Duration (mins each way)	Extra time (mins each way)	Penalties (yes/no)	Appointed by
League	20 mins	N/A	N/A	League



Match Balls

U7-U10 Size 3 match balls

U11-U14 Size 4 match balls

U15+ Size 5 match balls

All provided by the home club

Substitutes

U7 & U8 –Roll on/Roll off, 5 from 5

U9+ Roll on/Roll off, 7 from 7

Teamsheets

9v9 and 11v11 online match return

Club contact

Officials appointed by Paul Stalker - Paul.Stalker@northridingfa.com

MATCH FEES

Age group	Referee	Assistant referee	Travel Expenses	Paid by
U9 - U16	£30	N/A	Inclusive of fee	MFC via BACS
U16s	£50	£30	Inclusive of fee	MFC via BACS
U18 & U21	As Per Dev rules			

DURATION

League dependent - check with coaches on day

YORK CITY FC ACADEMY

(Sat/Sun)



Match Balls

U7-U10 Size 3 match balls
U11-U14 Size 4 match balls
U15+ Size 5 match balls
All provided by the home club

Substitutes

U7 & U8 –Roll on/Roll off, 5 from 5
U9+ Roll on/Roll off, 7 from 7

Teamsheets

9v9 and 11v11 online match return

Club contact

Officials appointed by Andy Kay 07833 501441 ydyflrefs@hotmail.com

MATCH FEES

Age group	Referee	Assistant referee	Travel Expenses	Paid by
U13s and below	£25	N/A	Inclusive of fee	YCFC via BACS
U14-U16s	£30	N/A	Inclusive of fee	YCFC via BACS
U18 & U21	As Per Youth Alliance rules			

DURATION

League dependent - check with coaches on day

NORTH RIDING ABILITY COUNTS LEAGUE

(Sat/Sun)



Match Balls

Provided by league

Teamsheets

Not required

League contact

Jasmine.Morris@northridingfa.com

01642717770

Substitutes

Rolling subs are permitted.

Fixtures

Monthly fixtures 1:30PM - 3PM
at Trinity School, Middlesbrough

MATCH FEES

League/Cup	Referee	Assistant Referee	Travel Expenses	Paid by
	£50	N/A	Up to £15 at 30p per mile	League

DURATION

League/Cup/Age group	Duration	Extra time (mins each way)	Penalties (yes/no)	Appointed by
U8/12/16	15 mins	N/A	N/A	League appointed
Open Age	20 mins	N/A	N/A	League appointed

NORTH RIDING WOMEN'S RECREATIONAL LEAGUE

(Sat/Sun)



Match Balls

Provided by league

Substitutes

Rolling subs are permitted.

Teamsheets

Not required

Fixtures

Monthly fixtures 1:30PM - 3PM
at Central Venue

League contact

Jasmine.Morris@northridingfa.com

01642717770

MATCH FEES

League/Cup	Referee	Assistant Referee	Travel Expenses	Paid by
	£50 for duration of fixture day		Up to £15 at 30p per mile	League

DURATION

League/Cup/Age group	Duration	Extra time (mins each way)	Penalties (yes/no)	Appointed by
Open Age	20 mins	N/A	N/A	League appointed

NORTH RIDING WALKING FOOTBALL LEAGUE

(SUN)



Match Balls

Provided by league

Substitutes

Rolling subs are permitted.

Teamsheets

Completed online

Fixtures

Monthly fixtures 1:30PM - 4PM
at Central Venue

League contact

Chris.Wood@northridingfa.com

01642717770

MATCH FEES

League/Cup	Referee	Assistant Referee	Travel Expenses	Paid by
	£40 for duration of fixture day		45p per mile	League

DURATION

League/Cup/Age group	Duration	Extra time (mins each way)	Penalties (yes/no)	Appointed by
Open Age	24 mins	N/A	N/A	League appointed
50+				

NORTH RIDING FA COUNTY CUP COMPETITIONS



Match Balls

See competition rules

Teamsheets

See competition rules

Substitutes

See competition rules

COMPETITION RULES

Competition contact

Paul Stalker 07725307822 paul.stalker@northridingfa.com

Conor Ledgeway +44 (0) 1642 717770 conor.ledgeway@northridingfa.com

Competitions

North Riding Senior Cup

North Riding Women's Cup

North Riding Men's County Cup

North Riding Men's Challenge Cup

North Riding U19s Cup

North Riding Junior Cups

North Riding Disability Cup

KEY CONTACTS



Conor Ledgeway Referee Development Officer

T: +44 (0) 1642 717770 Option 3

E: Conor.Ledgeway@northridingfa.com

Clair Shield Designated Safeguarding Officer

T: +44 (0) 1642 717770

E: Clair.Shield@northridingfa.com

Geoff Mann NRCFA Head of Mentoring

M: 07949 009912

E: Geoff.Mann@northridingfa.com

Paul Stalker NRCFA Promotion Pathway Coordinator &
Appointments Officer (North)

M: 07725 307822

E: Paul.Stalker@northridingfa.com

Matthew NRCFA Appointments Officer (South)

Cottingham M: 07736 323771

E: Matthew.Cottingham@northridingfa.com

Steven Wade Chief Executive Officer

T: +44 (0) 1642 717770

E: Steven.Wade@northridingfa.com



Our Purpose:

Enhance football, by developing an inclusive game that inspires people and communities.



North Riding County Football Association Ltd

Broughton Road
Stokesley
Middlesbrough
TS9 5NY

T: 01642 717770

E: support@northridingfa.com



RESPECT

#Weonlydopositive